

2025 COMPLETE CITY GUIDE

TOPEKA

See · Be · Free
YOURSELF

Kansas History Museum

SEE YOURSELF

Kansas' museum reopens in 2025

Live Entertainment

BE YOURSELF

Enjoy performers and events year-round

Outdoor Adventure

FREE YOURSELF

Explore over 60 miles of trails
in the Capitol City!

CHOOSE TOPEKA

One Topeka Family Shares
Why They Chose Topeka

FOREIGN

EMBRACE THE

EXPERIENCE

AT STORMONT VAIL EVENTS CENTER



EVENT
CALENDAR



Stormont Vail
EVENTS CENTER

785-251-5552 | info@stormontvaileventscenter.com

www.stormontvaileventscenter.com

SPONSOR
OPPORTUNITIES



TOPEKA

719 S Kansas Ave., Ste. 100
Topeka, KS 66603
785.234.2644
hello@VisitTopeka.com

EDITOR-IN-CHIEF
Bob Ross, Chief Marketing Officer

EDITORIAL LEAD
Cassie Carlson, Marketing and
Communications Account Manager

LAYOUT & DESIGN
Carolyn Lang, Brand Manager

WRITER
India Yarborough,
Director of Marketing and Communications

TRANSLATOR
Jessyca Moreno, Manager of
Downtown Topeka Inc.



ABOUT THE COVER:

#132, the oldest surviving Atchison, Topeka and Sante Fe locomotive, rests on a purpose-built stretch of track in the exhibition hall of the Kansas Museum of History. The museum reopens in 2025 after \$6 million in renovations. Learn more on page 6.

All information is accurate at the time of printing. However, Visit Topeka does not assume responsibility for accuracy. All rights reserved. No part of this publication may be reproduced, stored in a retrieval system or transmitted in any form or by any means, electronic, mechanical, photocopying, recording or otherwise, without prior consent of Visit Topeka. User Generated Content: Several photos in this guide were taken by Topekans and visitors and printed with permission.



Please recycle this magazine
or pass it on to a friend.

WELCOME to Topeka, the capital of our great state of Kansas! On behalf of this beautiful city and its people, we're grateful for the opportunity to welcome you to our community. Whether you're visiting for a day, or choosing to move here, we are confident you will discover more than you ever expected.

Topeka is a city rich in history and proud of its commitment to diversity and civil rights. We're home to the Brown v. Board of Education National Historical Park, in commemoration of the Topeka native the landmark case is named after. Downtown, you can learn more about our civil rights legacy by visiting Constitution Hall, site of the anti-slavery "Topeka Constitution." Or visit the Equality House, where the fight for LGBTQ+ equality continues to this day.

If you're a lover of arts and music, this city is for you! Each year, visitors flock to Topeka to enjoy events like Fiesta Topeka, For the Culture KS, India Mela and more. From park performances to arena acts, catch a show at one of our local venues. Or explore the NOTO Arts & Entertainment District or downtown Topeka on a First Friday. After, savor a drink at one of our coveted cocktail and wine bars like The Knox, Royal Society, or Salut.

Love the outdoors? Then, look no further! Topeka offers more than 70 miles of connected trails, along with access to the beautiful Kansas River, Lake Shawnee, and Gage Park—home to walking paths, gardens, the Kansas Children's Discovery Center and ever-popular Topeka Zoo. Plus, don't miss the hiking and biking trails awaiting you at locales like Kaw River State Park, featuring the only downhill mountain biking trails in Kansas!

For those looking to move here, we know you will fall in love with the quality of life our city has to offer. Topeka consistently ranks as one of the most affordable cities in the United States to buy a home, and Shawnee County has been named one of the top Kansas communities to raise a family. We also offer two of the top-10 school districts in the state of Kansas, world class health care with multiple major hospital networks, and the friendliest neighbors you could ask for!

With that said, thank you for picking up our guide. We hope you enjoy the content ahead and learn something new along the way. Please hop over to VisitTopeka.com and ChooseTopeka.com, or follow us on social media, for the latest updates. And welcome to Topeka!

SEAN DIXON
President, Visit Topeka

MICHAEL PADILLA
Mayor of Topeka



1 WELCOME

- 4 City Map
- 6 Cover Story

11 ATTRACTIONS

- 12 Gage Park
- 14 Historic Sites
- 24 Family Fun
- 26 NOTO Arts District
- 28 Regional Attractions
- 32 Downtown
- 35 Equality House
- 36 Performing Arts
- 38 Visual Arts
- 40 Outdoors
- 46 Golf

49 DINE & SHOP

- 50 Topeka's Shopping Scene
- 52 Local Makers & Products
- 53 Farmers Market
- 54 Topeka Vendors Market

- 56 Local Favorites
- 58 Fine Dining
- 60 Mexi-Kansas
- 63 Diners, Drive-Ins and Dives
- 64 Global Dining
- 66 Coffee Central
- 68 Sips & Swigs
- 70 Cheers to Beer
- 71 Prairie Pour Tour

72 HOTELS

79 EVENTS

- 80 Every Plaza
- 81 Stormont Vail Events Center
- 82 Tulip Time
- 84 Thunder Over the Heartland
- 86 Topeka Sports

- 88 Topeka Hockey
- 90 Cultural Festivals
- 92 Holidays/Seasonal Events
- 100 Topeka Zoo Lights

102 RELOCATION GUIDE

- 110 Family Spotlight





YOUR WAIT IS OVER

COMMERCIAL INSURANCE ACCEPTED



- + Expert-Level Emergency Physicians
- + Minimal Wait Time
- + Adult & Pediatric Care
- + MRI, X-Ray, CT Scan, Ultrasound, and Echocardiogram
- + Full Clinical Lab
- + Medical Detox
- + 24/7 Concierge Emergency Care, Inpatient, & Outpatient Services

6135 SW 17th St., Topeka, KS 66615

785-670-6760

topekahospital.com



Family. Friends. Community.

Garrison Ins and Fin Svcs Inc

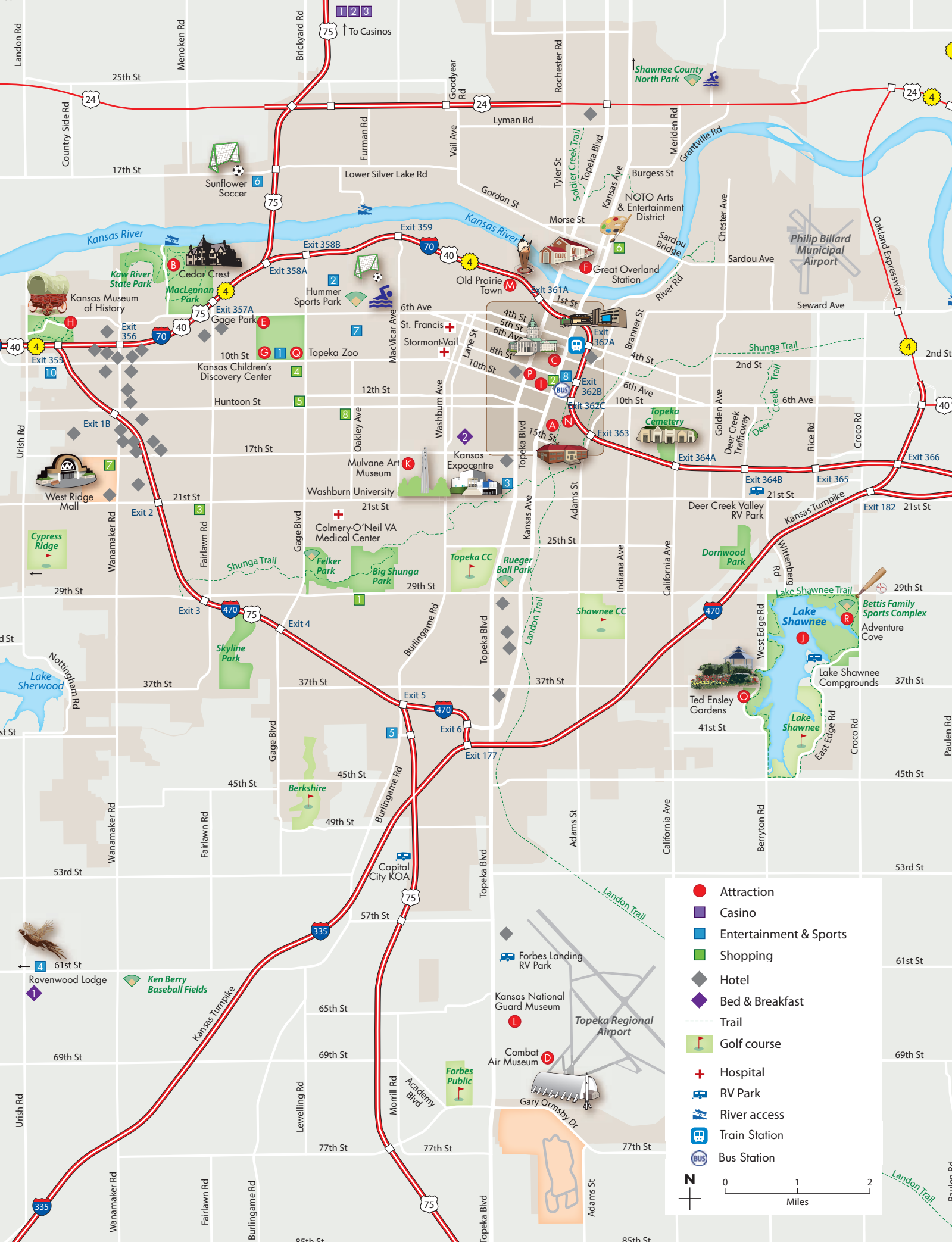
Jim Garrison, Agent
6750 SW 29th St
Topeka, KS 66614
Business: 785-272-0332
Mon-Fri 9:00am to 5:30pm
Saturday 9:00am to 11:00am
Any other wacky time by appt

We're all in this together.

State Farm® has a long tradition of being there. That's one reason why I'm proud to support Topeka residents and small business owners.

Here to help life go right.®





Attraction

Casino

Entertainment & Sports

Shopping

Hotel

Bed & Breakfast

Trail

Golf course

Hospital

RV Park

River access

Train Station

Bus Station

N

0

1

2

Miles

ATTRACTIONS

- A BROWN V. BOARD NATIONAL HISTORIC PARK & MUSEUM**
1515 SE Monroe St. (785) 354-4273
- B CEDAR CREST, GOVERNOR'S RESIDENCE**
One SW Cedar Crest Rd. (785) 296-3636
- C EVERGY PLAZA**
630 S Kansas Ave.
- D COMBAT AIR MUSEUM**
7016 SE Forbes Ave. (785) 862-3303
- E GAGE PARK**
6th Ave. & Gage Blvd. (785) 251-2600
- F GREAT OVERLAND STATION**
200 NW Railroad St. (785) 251-6945
- G KANSAS CHILDREN'S DISCOVERY CENTER**
4400 SW 10th Ave. (785) 783-8300
- H KANSAS MUSEUM OF HISTORY/
KANSAS STATE ARCHIVES RESEARCH ROOM**
6425 SW 6th Ave. (785) 272-8681
- I KANSAS STATE CAPITOL BUILDING**
SW 8th & SW Van Buren (785) 296-3966
- J LAKE SHAWNEE RECREATIONAL AREA**
3137 SE 29th St. (785) 251-2600
- K MULVANE ART MUSEUM**
1700 SW Jewell Ave. (785) 670-1124
- L MUSEUM OF THE KANSAS NATIONAL GUARD**
125 SE Airport Drive (785) 862-1020
- M OLD PRAIRIE TOWN AT WARD-MEADE PARK**
124 NW Fillmore St. (785) 251-6989
- N RITCHIE HOUSE**
1116 SE Madison St. (785) 234-6097
- O TED ENSLEY GARDENS**
SE 37th St. & West Edge Rd. (785) 251-2600
- P TIFFANY WINDOWS AT FIRST
PRESBYTERIAN CHURCH**
817 SW Harrison St. (785) 233-9601
- Q TOPEKA ZOOLOGICAL PARK**
635 SW Gage Blvd. (785) 368-9180
- R ADVENTURE COVE**
3125 SE Croco Rd. (785) 251-6800

CASINOS

- 1 GOLDEN EAGLE CASINO**
1121 Goldfinch Rd., Horton, KS (888) 464-5825
- 2 PRAIRIE BAND CASINO**
12305 150th Rd., Mayetta, KS (888) 727-4946
- 3 SAC & FOX CASINO**
1322 U.S. 75, Powhattan, KS (800) 990-2946

HOSPITALS

- + UNIVERSITY OF KANSAS HEALTH SYSTEM
ST. FRANCIS CAMPUS**
1700 SW 7th St. (785) 295-8000
- + STORMONT-VAIL HEALTHCARE**
1500 SW 10th Ave. (785) 354-6000
- + COLMERY-O'NEIL VETERANS' ADMINISTRATION
MEDICAL CENTER**
2200 SW Gage Blvd. (785) 350-3111

ENTERTAINMENT & SPORTS

- 1 HELEN HOCKER THEATER**
700 SW Zoo Pkwy (785) 251-5990
- 2 HUMMER SPORTS PARK**
6th Ave. & MacVicar Ave. (785) 295-3750
- 3 STORMONT VAIL EVENTS CENTER**
1 Expocentre Drive (785) 235-1986
- 4 RAVENWOOD LODGE**
10147 SW 61st St. (785) 256-6444
- 5 SPORT ZONE**
3909 SW Burlingame Rd. (785) 267-4658
- 6 SUNFLOWER SOCCER/TOPEKA SOCCER CLUB**
4829 NW 17th St. (785) 233-9700
- 7 TOPEKA CIVIC THEATRE AND ACADEMY**
3028 SW 8th St. (785) 357-5211
- 8 TOPEKA PERFORMING ARTS CENTER**
214 SE 8th St. (785) 234-2787
- 9 HISTORIC JAYHAWK THEATRE**
720 SW Jackson St. (785) 233-4295
- 10 SPORTS CENTER TOPEKA**
6545 SW 10th Avenue (785) 272-5522

SHOPPING

- 1 BROOKWOOD SHOPPING CENTER** 2709 SW 29th St.
- 2 DOWNTOWN TOPEKA** South Kansas Ave.
- 3 FAIRLAWN PLAZA** 21st & Fairlawn
- 4 FLEMING PLACE** 10th & Gage
- 5 GAGE SHOPPING CENTER** Gage & Huntoon
- 6 NORTH TOPEKA ARTS DISTRICT** North Kansas Ave.
- 7 WEST RIDGE MALL** 21st & Wanamaker
- 8 WESTBORO PLAZA** Huntoon & Oakley

DOWNTOWN TOPEKA



A NEW ERA FOR THE KANSAS MUSEUM OF HISTORY

UNVEILING A FRESH PERSPECTIVE ON KANSAS' STORIED PAST IN SUMMER 2025

The Kansas Museum of History is stepping into the future with its first major renovation since opening its doors in 1984. After closing in 2022 to embark on this ambitious transformation, the museum is set to reopen in summer 2025, boasting a bold new look and an innovative approach to storytelling that promises to reimagine how visitors experience the Sunflower State's rich history.

Gone is the familiar chronological layout that guided visitors through Kansas' past in a linear fashion. In its place is a thematic design that delves into the complex and interconnected stories that have shaped Kansas over the centuries. Through four primary themes—Bleeding Kansas, Making Kansas, Connecting Kansas, and Changing Kansas—guests will encounter a curated blend of artifacts and narratives that explore the state's pivotal role in national events, its cultural evolution, and its ongoing transformation.

HIGHLIGHTS OF THE NEW EXPERIENCE

Fans of the museum's beloved staples can rest assured that iconic pieces like the 1880 Cyrus K. Holliday steam locomotive remain at the heart of the redesigned displays. This impressive artifact, a testament to Kansas' role in shaping the nation's transportation networks, will now be contextualized in fresh and thought-provoking ways.

However, the museum's transformation is about more than preserving the familiar. One of the most exciting additions is the "window into storage," which provides an unprecedented peek into the Kansas Historical Society's vast collection of more than 122,000 artifacts. With only about 3,000 artifacts typically on display at any given time, this new interactive feature allows visitors to engage with rarely seen treasures that span centuries of Kansas history.

The "window into storage" invites visitors to shine a light behind the scenes on iconic technology like an iron lung that once saved lives during the polio epidemic, or a 19th-century stagecoach that traversed the Great Plains as part of the Butterfield Overland Dispatch. Other fascinating glimpses include a Depression-era outhouse and countless everyday objects that hold extraordinary stories. The "window into storage" bridges the gap between public exhibition and archival preservation.

A NEW LOOK FOR NEW STORIES

The redesigned, thematic museum spaces will offer an engaging and accessible environment for visitors of all ages. The "Bleeding Kansas" gallery delves into the turbulent years leading up to the Civil War, highlighting the state's role as a battleground for freedom. "Making Kansas" celebrates







the industries and communities that built the state, from farming and railroads to the diverse cultural groups that call Kansas home. “Connecting Kansas” examines the ways transportation, communication, and innovation have linked the state to the wider world, while “Changing Kansas” focuses on the transformations that continue to shape the state’s identity.

Each thematic gallery combines historic artifacts, interactive elements, and personal stories to bring the past to life in vivid detail. This fresh approach ensures visitors can explore topics that resonate most deeply with their interests while gaining a broader understanding of Kansas’ legacy.

WHY YOU SHOULD VISIT

The Kansas Museum of History’s reopening marks a milestone not only for Topeka but for the state as a whole, and the latest upgrades ensure the museum remains a premier destination for all. Whether you’re a lifelong Kansan or a curious traveler, the museum’s reimagined exhibits promise a memorable journey through the stories, struggles, and triumphs that define Kansas.

Mark your calendars for summer 2025 and get ready to rediscover history in a new way! Welcome back to the Kansas Museum of History—where the stories of the past shape the possibilities of the future.





UNLOCKING HISTORY:

A PEEK INSIDE THE STATE ARCHIVES

The Kansas State Archives has preserved the rich heritage of the Sunflower State, its people, and their stories since 1875—and it's not just for the history professionals! We invite you to take advantage of archive resources. Whether you're a student, teacher, researcher, genealogist, or simply someone interested in Kansas history, the state archives offer insight for all. From letters written by well-known figures such as Carry Nation or John Brown, to records that bring your family's legacy or house history to light, they have the most comprehensive collection of historical documents in the state. The State Archives are located at the Kansas Historical Society, in the same facility as the Kansas Museum of History. For more information, explore ksks.org/state_archives.

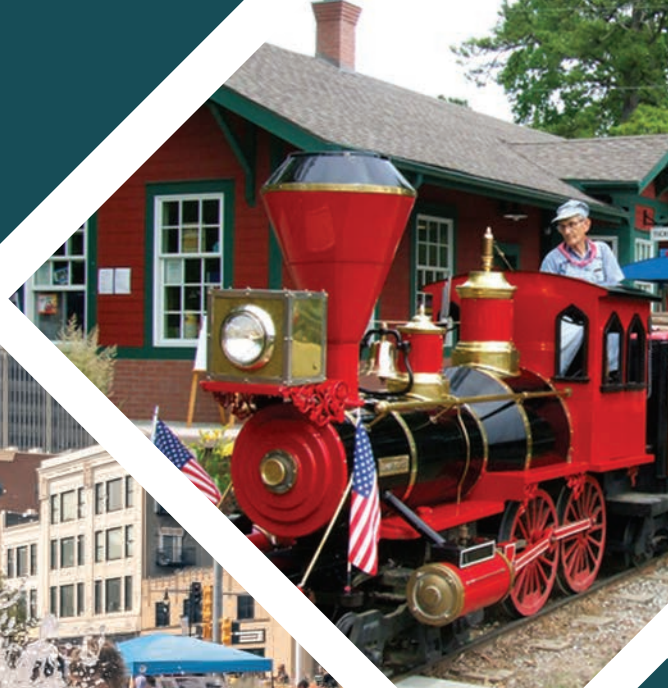
REASONS FOR YOUNG FAMILIES TO VISIT:

- Local histories and genealogical materials for Kansas and key settler states, including microfilmed Kansas vital records (late 1800s–1911), federal censuses (1860–1940), and Kansas state censuses (1865–1925).
- Over 30,000 maps of Kansas, the West, and the U.S., showing area development and neighborhoods. These maps are a favorite among children!
- Thousands of historical photographs depicting Kansas life, from portraits to street scenes, providing insight into ancestors' lives.
- Largest newspaper collection in Kansas, with over 70,000 rolls of newspaper microfilm, spanning from the 1850s to present.
- Research Room: Ideal for classroom assignments, National History Day projects, or exploring state history for Kansas Day.

DID YOU KNOW?

Kansas Day is celebrated annually on Jan. 29 to commemorate our state's admission to the Union in 1861!







SA
N
O
O
T
O
C
T
R
A
C
T
I
O
N
A
T
T
R
A
C
T
I
O
N
A
T
T
R
A
C
T
I
O
N



MEET NISHA AND THOMAS

Sumatran Tigers Thomas and Kinleigh-Rose, nicknamed Nisha, joined the Topeka Zoo family in early 2023. Sumatran Tigers are listed as a critically endangered species. Coming from the Kansas City and Jacksonville zoos, respectively, Thomas and Nisha were paired through a species survival program run by the Association of Zoos & Aquariums. With this in mind, the zoo hopes to welcome a Sumatran cub to the crew in the year ahead! The tigers will soon be part of a new immersive educational program geared toward the animal advocates of tomorrow, providing a unique window into the lives of these magnificent creatures.



GAGE PARK

TOPEKA ZOO & CONSERVATION CENTER

Calling animal lovers of all ages! From long-time exhibits like the Tropical Rainforest and Black Bear Woods to newer additions like Camp Cowabunga, the Kay McFarland Japanese Garden, and state-of-the-art Giraffe & Friends habitat, there's something for everyone to enjoy at this Topeka staple in glorious Gage Park.

UPCOMING EXHIBITS & EVENTS

Visit often to see the latest, as the Topeka Zoo is constantly growing and has another expansion on the horizon! Keep an eye on the zoo's website, TopekaZoo.org, to learn about new installments and upcoming events. Don't miss after-hours beer and wine tastings, zoo-wide trick-or-treating for Halloween, Party for the Planet on Earth Day, Zoo Lights (see page 100), and more!

CAROUSEL & MINI TRAIN

Built in 1908, the grand carousel in Gage Park allows visitors to step back in time and enjoy the timeless music of an original Wurlitzer band organ! After a whirl on the carousel, hop over to the park's mini-train depot for a chance to take a joy ride on the Gage Park Mini-Train! Tracks for the original diesel-powered mini-train were first laid in the late 1960s. After running for more than 55 years, that diesel-powered engine was retired and replaced with the new fully electric locomotive you see today.

KANSAS CHILDREN'S DISCOVERY CENTER

The discovery center is a hands-on children's museum where families can explore, create, and learn through play! It features 15,000-square-feet of indoor exhibits that delve into science, art, construction, careers and more. Children can paint on the walls, experiment with light, run a grocery store, build a tower, and so much more! Special areas for babies and toddlers provide a play place for everyone. Just outside, families can traverse a 4.5-acre certified Nature Explore Classroom, home to adventures like a trike trail, pirate ship, treehouse, natural stream, and educational gardens. For more, visit KansasDiscovery.org

DON'T MISS THIS 2025 EXHIBIT

Thomas & Friends: Explore the Rails! Step onto the Island of Sodor from Jan. 18 through May 11. Visitors can climb aboard a large model of Thomas the Tank Engine, race trains along a giant track, work together to sort and load cargo, and more.

DISCOVERY CENTER DEVELOPING:

In September 2024, the discovery center broke ground on a \$10 million expansion that will double the size of the museum. Get ready for 11 new exhibit experiences, three new learning lab spaces, a new traveling exhibit gallery, the world's largest climbable sunflower, and so much more! The expansion is anticipated to be complete



by late 2025, and the discovery center will remain open throughout the expansion.



OUR CAPITOL IS CAPITAL

In addition to being a hot stop for educational travel and tourism, the Capitol hosts various events throughout the year, including a farmer's market each Wednesday between May and October.

Capitol Dome



The Kansas Museum of History

HISTORIC SITES

KANSAS STATE CAPITOL BUILDING

The Kansas State Capitol, one of the state's most iconic buildings, is located in the heart of downtown Topeka. Outside, you'll find exquisite architecture and historical statues adorning the grounds. Inside, you'll find odes to Kansas history that showcase defining moments, and impactful people, in the trajectory of our state and country. Explore the grounds, marvel at larger-than-life works of art inside and out, and stop by to learn about the halls where history is being made today. Be sure to round out your trip with a visit to the Kansas State Library or tour of the Capitol dome. You won't want to miss the views that await! Top it all off with a stop at the Capitol gift shop, featuring Kansas-made artisan goods.

GREAT OVERLAND STATION

A major piece of Topeka's railroad heritage, Great Overland Station is a beautiful example of the Free Classical Revival style of the 1920s. Designed by American architect Gilbert Stanley Underwood, the building was completed in 1927 and formerly known as Union Pacific Station. Although no longer an active station, visitors can witness trains pass by the depot daily and take in various traveling and permanent exhibits, while marveling at the grandeur of this historic building. Also, don't miss events held there throughout the year!



Great Overland Station

THE KANSAS MUSEUM OF HISTORY

As we write this, the Kansas Museum of History is in the final phase of a two-year renovation. New and exciting exhibits are expected to debut in summer 2025.

Until then, visitors can still explore the 2.5 miles of walking trails surrounding the Museum, featuring the historic Stach Schoolhouse and Potawatomi Mission. Also browse the nearby State Archives, collections maintained by the Kansas Historical Society, to read letters written by various historical figures like John Brown and Carrie A. Nation. See page 9 for more information.





Museum of the National Guard

HISTORIC SITES

COMBAT AIR MUSEUM

The Combat Air Museum is a beloved stop for flight enthusiasts of all ages. Touting the largest collection of WWI replica aircraft in the Midwest, Combat Air is one of only a handful of major aviation museums in the United States located on an active airfield, and museum visitors are regularly treated to the flying activities of Air Force fighter aircraft and Army helicopters.

MUSEUM OF THE NATIONAL GUARD

Established in 1997, the Museum of the Kansas National Guard preserves the militia heritage of the Kansas Army and Air National Guard. The museum has more than 150 exhibits inside, 37 exhibits outside, and a separate building containing 18 pieces of military equipment. Perhaps most notable among its exhibits is a replica of the “Swamp” tent that appears in the 1970s hit series *M*A*S*H*. Also, don’t miss their extensive military research library, weapons gallery, M60 tank and more!

OLD PRAIRIE TOWN AT WARD-MEADE

History, family fun, outdoor adventures, and more await you at Old Prairie Town at Ward-Meade. Step back in time to explore this 1800s prairie village, complete with a general store, drug store, 1854 replica log cabin, schoolhouse, train station and more. One of the crowning exhibits is the Ward-Meade Mansion. It is listed on the National Register of Historic Places, as “the story of the house and its occupants reflects the history, changes, and expansion of the city” of Topeka.

Debuted at Old Prairie Town in 2022, a new Native American exhibit features an authentic indigenous village and was made possible through a collaboration between Shawnee County Parks & Recreation and the Citizen Band and Prairie Band Potawatomi Nation tribes. Also, don’t miss the lovely botanical garden located outside near the Ward-Meade Mansion. It features a zen garden, boisterous blooms, and is home to seasonal events like Garden Glow and Tulips at Twilight.

Combat Air Museum

Old Prairie Town at Ward-Meade



GIRLS IN AVIATION

Girls in Aviation – The Combat Air Museum and Museum of the Kansas National Guard team up each year to host a “Girls in Aviation” day, inviting area Girl Scouts to learn more about aviation and careers in the field!



Constitution Hall



BLEEDING KANSAS, THE UNDERGROUND RAILROAD & TENNESSEE TOWN

BLEEDING KANSAS: A FIGHT FOR FREEDOM

+ Discover Constitution Hall

In the mid-1800s, Kansas was at the heart of the nation's fierce debate over slavery.

Following the passage of the Kansas-Nebraska Act of 1854, which allowed the territories to decide for themselves whether they would permit slavery, settlers rushed into Kansas to shape its future. This period, known as Bleeding Kansas, was marked by violent confrontations between pro-slavery forces and abolitionists who believed in a free state.

Topeka, founded in 1854 as an abolitionist stronghold, became an epicenter of resistance to slavery. In 1855, Topeka's free-state supporters gathered to form a constitution rejecting slavery, known as the Topeka Constitution. This decision set the stage for the city to become a beacon of freedom, drawing abolitionists and anti-slavery advocates from across the nation.

Discover the site where the Topeka Constitution was drafted by visiting Constitution Hall in downtown Topeka! Also known as the "Free State Capitol," this nationally significant historic site, at 429 S. Kansas Ave., has been restored with assistance from the Save America's Treasures Program. Activity at the Free State Capitol challenged the nation to stop the westward spread of slavery, and the building also served as headquarters for Underground Railroad operations on the Lane Trail to freedom in the north. Following renovations, Constitution Hall will reopen as a museum-quality space in early 2025. Visit FreeStateCapitol.org for updates and hours.

THE UNDERGROUND RAILROAD

Topeka's strategic location also made it a key stop on the Underground Railroad, a secret network of routes and safe houses that helped enslaved African Americans escape to free states and Canada. Abolitionists in Topeka

played pivotal roles in offering sanctuary to freedom seekers. The city's free-state stance and its proximity to Missouri, a slave state, made it a key destination for those escaping enslavement.

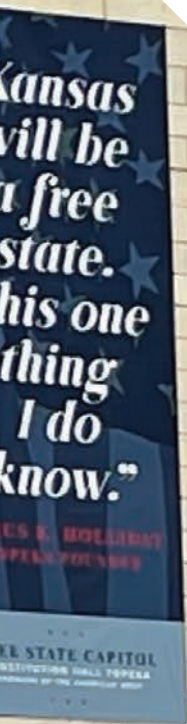
TENNESSEE TOWN

Established in 1879, on what was Topeka's southwestern end, Tennessee Town became home to hundreds of settlers who escaped slavery in the state of Tennessee. The established community included a church, school, and grocery store, and Tennessee Town was famously home to the first kindergarten for African American children west of the Mississippi River.

Over the next several decades, businesses sprang up along Huntoon Street on the edge of Tennessee Town, including the Caravan Club, the favored watering hole of state legislators for years, and Silver's Furs. The historic *Brown v. Board of Education* Supreme Court case in 1954 ended school segregation, but it also ended the existence of Topeka's historically Black schools, including Tennessee Town's Buchanan School.

LOOKING FORWARD

Today, Topeka honors its history through several historic sites and museums that tell the story of Bleeding Kansas, the Underground Railroad, and more. The Kansas Museum of History showcases exhibits on the struggles and triumphs of those who fought for liberty during the Bleeding Kansas era. Constitution Hall honors Topeka's unique place in our national story. And the *Brown v. Board of Education* National Historic Site in Topeka marks another critical moment in the ongoing fight for civil rights, commemorating the landmark 1954 decision that declared segregation in public schools unconstitutional.



Tennessee Town



BROWN V. BOARD OF EDUCATION NATIONAL HISTORICAL PARK

The story of Brown v. Board of Education started in Topeka, and visitors to the area can tour the national historic site and museum commemorating that case! When Oliver Brown and fellow Topeka parents agreed to be plaintiffs in the landmark U.S. Supreme Court case that outlawed segregation in public schools, they didn't know they would make history. Their legacies are remembered in the halls of Topeka's historic Monroe Elementary School, home to the Brown v. Board of Education National Historical Park.

In 2021, Topeka's Brown v. Board site was added as a stop on the U.S. Civil Rights Trail. In 2022, President Biden signed the Brown v. Board of Education National Historical Park Expansion and Redesignation Act into law, adding one acre of land adjacent to the current Topeka site for museum use. And in 2024, Brown v. Board celebrated its 70th anniversary.

Visit the Monroe School to gain a better understanding of the 1954 court decision and a greater appreciation for the role that case played in the broader U.S. Civil Rights Movement. After touring the museum, wander over to the inspiring Brown v. Board mural across the street for a photo op in front of this colorful commemoration to justice and peace.

DID YOU KNOW?

Topeka has a proud history of Black excellence. Topeka natives include Harlem Renaissance poet, novelist, and playwright Langston Hughes; Nick Chiles, editor and publisher of the Topeka Plaindealer, one of the longest running Black-owned newspapers in the U.S.; and Lizzie Riddick, who, along with Edward Stephens, founded the second-oldest Black college in Kansas. This Topeka college, the Kansas Industrial and Educational Institute, would receive the support of Booker T. Washington and became known as the "Tuskegee of the West."







John and Mary Ritchie: True Reformers



THE HISTORIC RITCHIE HOUSE
A Preservation Project of
the National Historic Trust
August 29, 1999

About the Journey
**The KANSAS**
African American
HISTORY Trail

Ritchie House

Curtis House

THE
CHARLES
HOUSE

1503

Mamie Williams House



ADDITIONAL SITES OF SIGNIFICANCE

HISTORIC RITCHIE HOUSE

The Historic Ritchie House, 1116 S.E. Madison St., was built in 1856 by abolitionists John and Mary Jane Ritchie. It served as a stop along the Underground Railroad and is considered Topeka's oldest home. Located next door to the Shawnee County Historical Society, public tours of the house are conducted Tuesday through Thursday 9 a.m. to 1 p.m. For more information, visit ShawneeCountyHistory.org or contact the county historical society.

CURTIS HOUSE

Charles Curtis, born in 1860 in North Topeka, was the great-grandson of a Kansa Indian Chief and became the first Native American to serve in the U.S. Congress. He served as a U.S. Representative, Senator, and Vice President under Herbert Hoover, playing a key role in Native American policy with the Curtis Act of 1898. The Charles Curtis House, 1101 SW Topeka Blvd., was built in 1879 and served as his Kansas residence. It now operates as a museum, celebrating his legacy and place in Topeka's history.



DON'T MISS THESE LOCATIONS!

While exploring our historic sites, keep your eyes peeled for more notable spots!

MAMIE WILLIAMS HOUSE – Though not open to the public, this house at 1503 S.E. Quincy St. was once home to acclaimed Topeka educator Mamie Williams, who served as principal of Monroe School, where the Brown v. Board museum now lives.

NICK CHILES – In downtown Topeka on 7th Street, between Quincy Street and Kansas Avenue, sits a building believed to have been home to the Topeka Plaindealer. Founded by Nick Chiles, The Plaindealer became the most successful Black-owned newspaper in the region and one of the longest-serving Black-owned newspapers in the country.

DOWNTOWN TOPEKA POST OFFICE – This historic limestone structure at 424 S. Kansas Ave. was placed on the National Register of Historic Places in 2015 for its architectural significance and role in the landmark Brown v. Board of Education. A third-floor courtroom in this building is where one of the preceding cases to the national Brown v. Board case was first tried.

FAMILY FUN

GREATPLAY TOPEKA

You'll find tons of exciting activities for the entire family, including a trampoline park, arcade games, laser tag, paintball, FootGolf, disc golf, bike trails and more!

BONKERS

Enjoy a fun-filled day with the fam, featuring a giant play maze with a two-story slide, arcade games for all ages, and a notable food menu!

LEAP TRAMPOLINE PARK

Take your indoor family outings to a new level with a jump area, rock wall climbing, dodgeball and more! Be sure to check out weekend pricing and events like Toddler Time and Cosmic Night.

SKY ZONE TOPEKA

Get active with a game of SkySlam (trampoline basketball), or enjoy one of their special attractions, like the Warrior Course, Freestyle Jump, Ultimate Dodgeball, SkyJoust, Foam Zone and Free Climb!

SPORTS CENTER

From mini-golf and arcade games to go-karts, batting cages and a driving range, Sports Center offers a bit of fun for everyone. Learn more about their many offerings at SportsCenterTopeka.com.

POTWIN POTTERY

Put your creativity to the test by picking a piece, planning your design, selecting your colors and painting away! Fire your piece in the kiln, and pick it up once the creation is done.

FAMILY FAVORITES:

- B&B Theatres
- Lake Shawnee (Adventure Cove, camping, 7-mile paved trail loop, see pages 41, 45)
- Mini golf (see page 47)
- Topeka and Shawnee County Public Library (art gallery, kids library, storytime)
- Evergy Plaza (splash pad, fountain shows, movie nights, see page 80)
- Mulvane Art Lab (kid-focused creative lab inside the Mulvane Art Museum)
- Old Prairie Town at Ward-Meade (see page 14)
- The Mud Room (community pottery studio)
- Gage Park (zoo, discovery center, outdoor fun, see pages 12-13)
- Rip-On Skate Park (near Washburn & 21st, along the Shunga Trail)



Sports Center



Sky Zone Topeka



Leap
Trampoline
Park



Bonkers



Potwin Pottery



The Wheel Barrel



NORTH TOPEKA ARTS & ENTERTAINMENT DISTRICT

From local shops and eateries to pocket parks and murals, the NOTO Arts & Entertainment District is a must-visit.

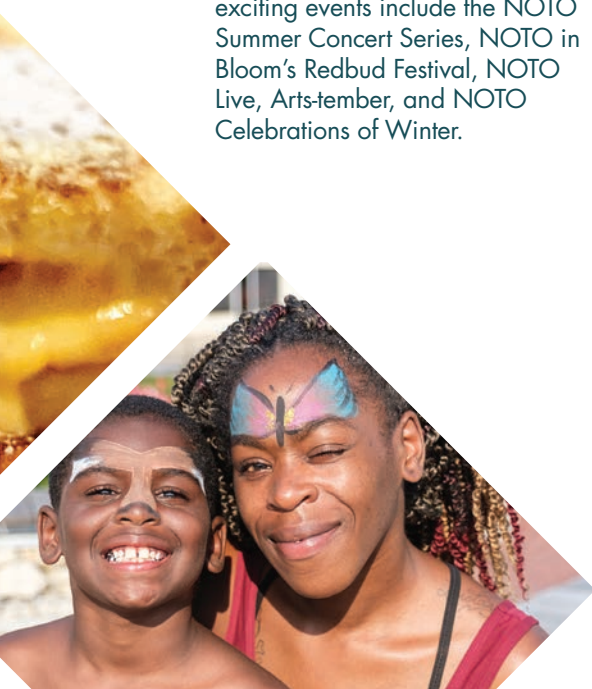
While the district delights year-round, stop by on the first Friday of each month to find special deals, outdoor concerts, expanded shop hours and more!

With more than 50 displays of public art in NOTO alone, wander through the district to spot sculptures and murals at each twist and turn! Some of our favorite colorful creations include the “Greetings from Topeka” postcard at Redbud Park; the surreal “Elephants on Parade” artwork along N.W. Laurent St.; and a new multicultural mural that highlights the African American, Hispanic and Native American histories of our area. When you’re ready to head indoors, stop by the NOTO Arts Center or explore galleries like Amused for unique finds by local artists. And that’s just the start! Visit ExploreNOTO.org for a complete list of businesses, as well as a calendar of upcoming events.



FIRST FRIDAYS:

Explore NOTO on the first Friday of each month for First Friday Artwalk, a celebration of art, music, and culture. Other exciting events include the NOTO Summer Concert Series, NOTO in Bloom’s Redbud Festival, NOTO Live, Arts-tember, and NOTO Celebrations of Winter.



While we can’t name all the hot spots on one page, you won’t want to miss these local favorites:

- **ARTISMO GALLERY & BISTRO** for a blend of food, art and music
- **BRADLEY’S CORNER CAFÉ** for the best pies around
- **COMPASS POINT** home of Dirty Girl Adventures
- **DECADES GARAGE** for vintage finds and retro collectibles
- **ECLECTIC DESIGNS** for mid-century furniture and vintage styles
- **THE GLASS STATION** for a trove of glass treasures
- **KAW RIVER RUSTICS** featuring more than 50 antique and artisan booths
- **ODIN’S LAIR** for axe-throwing fun
- **ONYX WELLNESS CAFÉ** for coffee or a treat
- **ROUND TABLE BOOKSTORE** for a great selection of new and used books
- **TOOT SWEET** for the perfect, retro-inspired candy shop stop
- **THE WHEEL BARREL** for gourmet grilled cheese and specialty cocktails

REGIONAL ATTRACTIONS

FLINT HILLS

Nestled west of Topeka, the Flint Hills region is comprised of 22 counties and home to both the Flint Hills National Scenic Byway and the Native Stone Scenic Byway, taking you on a picturesque journey through native grasses and hills of the Heartland. To learn more, visit TravelKS.com/flint-hills/!

PERRY LAKE

Perry Lake, a popular 11,000-acre reservoir just outside Topeka, is the perfect place for boating, fishing, camping, and swimming. Home to waterfront restaurants High Tide 21 and Mulligans on the Lake, this area offers all you need for a day of family fun. Visit in the evening to catch gorgeous views of the sun setting over the lake! Looking for more than water adventures? Perry Lake is encircled by forested rolling hills offering 25 miles of horse trails and 20 miles of biking and hiking trails.

LECOMPTON

Originally named “Bald Eagle” for the many eagles nesting nearby, Lecompton was founded in 1854 on the south bank of the Kansas River. In 1855, the territorial legislature chose Lecompton to be the official capital of the Kansas Territory, clashing with the anti-slavery Free State Legislature created in Topeka around the same time. Today, Lecompton features a historic walking tour with 34 stops. For more information, visit LecomptonKansas.com.

SUNFLOWER STATE OF MIND

Each year, many flock to area sunflower farms in late summer to bask in bright, yellow flowers standing tall in the Kansas sun. These fields make for the perfect Sunflower State photo op, providing joy and inspiration to all.

DOVER

Visit the town of Dover and its historic Sommerset Café to step back in time! The Sommerset building began as Sage General Store in the late 1800s, and the café has become well known for its homestyle meals and pies. While in Dover, head over to Echo Cliff Park, where visitors can enjoy folk art, picnic tables, and scenic views of the 50-foot-high cliffs that give the park its name. Dover also sits along Kansas’ 75-mile Native Stone Scenic Byway, featuring natural limestone formations and stunning stonework. Learn more about the byway by visiting TravelKS.com.

AGRITOURISM

From you-pick farms where you choose produce and flowers by hand to family businesses involving you in the wine-making process, Topeka-area agritourism stops are ready to welcome you! Timing is everything for these activities, as many are subject to seasonal availability.

86TH STREET ORCHARD Topeka, KS

Apples, peaches, blueberries, blackberries, tomatoes and honey

BERRY HILL UPICK FARM Berryton, KS

Sunflowers, pumpkins, honey, sweet corn for purchase and you-pick

GARY’S BERRIES Grantville, KS

Fall and winter festivals feature a pumpkin patch, corn maze, corn pit, campfires, and more

MORE NEARBY PLACES TO VISIT:

- **GRINTER’S SUNFLOWER FARM** Lawrence, KS
- **BIG SPRINGS BERRIES** Lecompton, KS
- **REES FRUIT FARM** Topeka, KS
- **ALMA CREAMERY** Alma, KS

FARM TO TABLE

On the hunt for fresh, locally sourced food without the work? Look no further than northeast Kansas, where you’ll find dreamy farm-to-table dining experiences that delight!

ORIGIN RESTAURANT AT THE BURNING BARREL

Lecompton, KS
(BurningBarrelKansas.com)

SALTWELL FARM KITCHEN

Overbrook, KS
(SaltwellFarmKitchen.com)

ALSO EXPLORE:

WAMEGO, KS

Travel northwest from Topeka to visit the OZ Museum and its yellow brick road! Don't miss Toto's Tacos on the same block.

OREGON NATIONAL HISTORIC TRAIL

Travel this famed route of westward migration through a stretch of northeast Kansas! Learn more about the trail at [NPS.gov](https://www.nps.gov).



Lecompton, KS
[@historiclecomptonkansas](https://www.instagram.com/historiclecomptonkansas)

High Tide
Perry, KS



HISTORIC LECOMPTON

**Civil War
Birth Place**



**Where Slavery
Began to Die**

Kansas & National Historic Landmarks

10-4 pm Wed-Sat. | 1-5 pm Sun

(785) 887-6148 | www.lecomptonkansas.com

Historic Topeka Cemetery

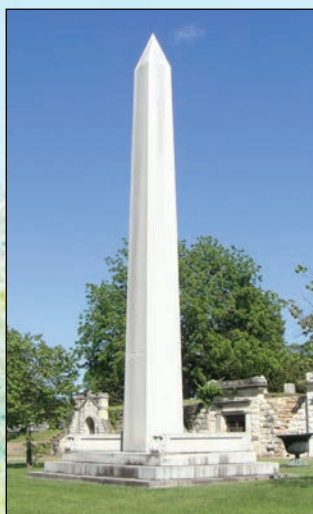


Historic Topeka Cemetery is on the National Register of Historic Places. Our eighty acre outdoor museum of Topeka and Kansas history has plenty of diversified burial options available.

Temple Beth Sholom Cemetery is located within our cemetery and our Holy Cross Catholic area is consecrated.

Inquire today about the various burial options.

**Our Mausoleums,
Monuments & Memorials
all have stories to tell.**



This monument was erected for James Hurley, the general manager of the Atchinson, Topeka and Santa Fe Railroad.

Cemetery Hours

Seven days a week during daylight hours

Guided tours

Call our office to schedule a tour for your family, club or organization

Friends of Historic Topeka Cemetery

Get involved with preserving this 165-year-old outdoor museum of Topeka & Kansas history

Genealogy

Burial records are available for family members and researchers

Plan for the future

Come find your own special place here

Topeka Cemetery is your cemetery

Let us tell your story!!



We offer Green Burial options for cremains, ground burial or scatter cremains in our Scattering Garden area.

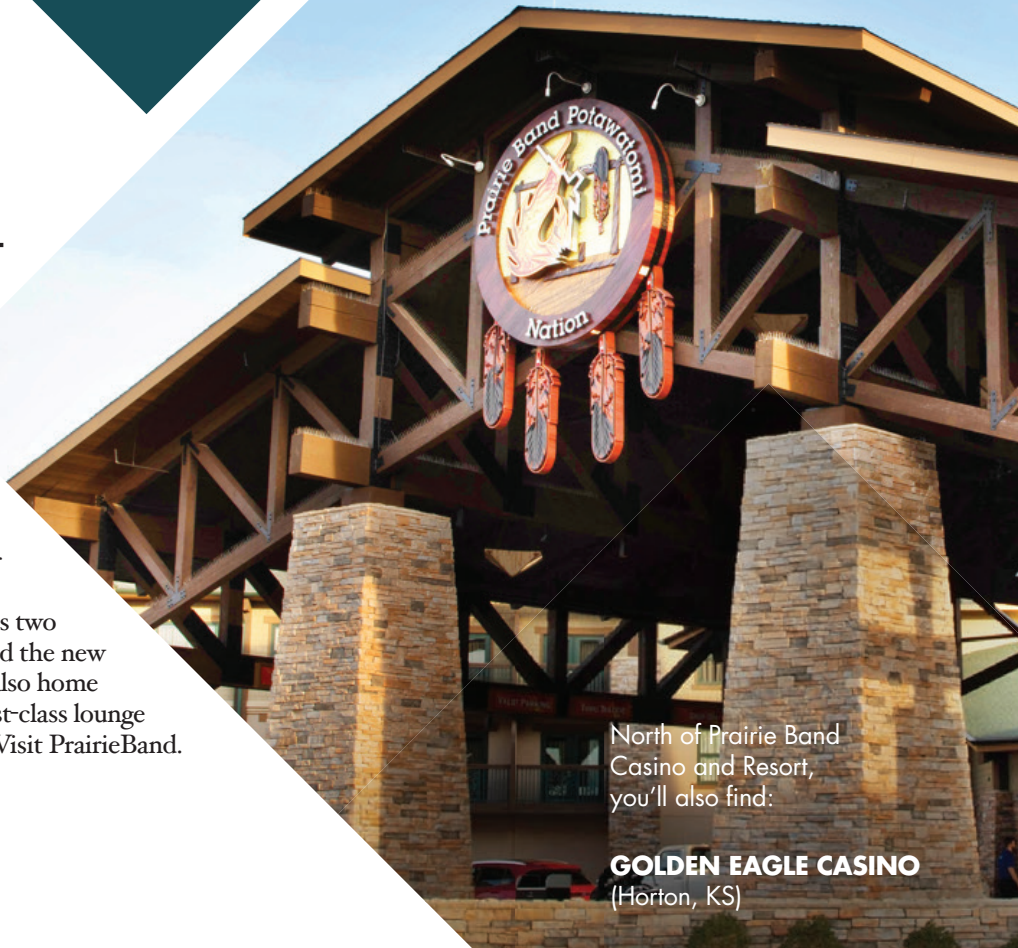


1601 SE 10th Avenue | (785) 233-4132 | www.TopekaCemetery.com | TopekaCemetery@gmail.com

FEELING LUCKY?

PRAIRIE BAND CASINO AND RESORT (MAYETTA, KS)

Just 20 minutes north of Topeka, you'll find Prairie Band Casino and Resort! This luxury casino and resort, operated by the Prairie Band Potawatomi Nation, features a 35,000-square-foot casino and three restaurants. Enjoy the resort's indoor pool, performances inside their 1,100-seat venue, or go for par at Firekeeper Golf Course, the No. 1 public golf course in Kansas! The Sunrise Tower addition features two and three-bay suites, luxury hotel rooms, and the new Cedar & Sage Spa & Salon. Prairie Band is also home to TopGolf Swing Suites, each offering a first-class lounge experience and immersive indoor golf play. Visit PrairieBand.com to book your stay today!



North of Prairie Band Casino and Resort, you'll also find:

GOLDEN EAGLE CASINO (Horton, KS)

SAC AND FOX CASINO (Powhattan, KS)

WINERIES

CROOKED POST WINERY (OZAWKIE)

Located north of Topeka, Crooked Post Winery is inspired by Italian architecture and European winemaking. Their wines are made from locally grown French-American hybrid wine grapes, which are hand-picked and pruned on site. The winery offers tours and tastings and is known for its harvest parties, which allow guests to participate in the winemaking process. Spend time in the tasting room or on the patio to enjoy wines, wood-fired pizzas, and gourmet cheese and breadbaskets.

PRAIRIE FIRE WINERY (PAXICO)

Prairie Fire Winery is a "dirt to glass" operation in the Flint Hills with some extraordinary views. It spans about 60 acres and produces award-winning wines crafted from Kansas-grown grapes. After sampling the wines, stroll through rows of vines for superb photo ops. Also, check out their artisan products, including cheese and candles.

EMPTY NESTER'S WINERY (LECOMPTON)

Owned and operated by two empty nesters who started making fruit wines as a hobby, Empty Nester's Winery in historic downtown Lecompton is true to its name. This small-scale winery makes and bottles its wine in-house, exclusively producing fruit wines, rather than your typical reds and whites.

OTHER WINERIES TO VISIT NEARBY:

- Z&M TWISTED VINES (vineyard and tasting room in Lawrence)
- WYLDEWOOD CELLARS WINERY (tasting room in Paxico)
- OZ WINERY (tasting room Wamego)
- 456 WINERIES (tasting room in Wamego, with multiple wineries under one roof!)





evergy

Mingus Leather Studio & Gifts



CYRUS

CoreFirst

Hazel Hill

Topeka
Performing
Arts Center





Evergy Plaza

DOWNTOWN

With \$500 million and counting recently invested in Topeka's downtown, the heart of our capital city continues to grow. Whether you're in search of a swanky boutique hotel, an exquisite craft cocktail, food for any mood, or the perfect entertainment, downtown Topeka is your go-to stop! Catch a concert or show at the Topeka Performing Arts Center, Evergy Plaza or historic Jayhawk Theatre. Get some axe throwing in at Axe & Ale, enjoy a round of indoor golf at The Tee Box, or put your gaming skills to the test at Spawn Inn. Hungry after all that activity? Stop by one of downtown's many restaurants for a quick bite to eat. Looking for something a bit more upscale? Book your reservations for The Weather Room, The White Linen, or Knox Cocktail Lounge. The list truly goes on!

While there's much more to explore, we'd be remiss if we didn't mention the following downtown treasures!

WHERE TO SHOP:

ABSOLUTE DESIGN BY BRENDA for unique gifts, flowers and decor

DISTINQUE' GENTLEMAN, where you'll find rare apparel and accessories

HUNTER & LAINE for a variety of fun finds and decor

MINGUS LEATHER STUDIO & GIFTS for carefully crafted artisan leather goods

THE MIX boutique, featuring new arrivals every week

MOBURTS SPICES & MORE for specialty spice blends and olive oil, vinegar pairings

OLIVE BODEGA for Mediterranean food to go

PRAIRIE GLASS ART STUDIO for fused-glass creations

WHERE TO EAT & DRINK:

THE CELTIC FOX Topeka's beloved Irish pub

FORWARD NUTRITION for protein shakes, herbal teas and thirst quenchers

GLOBE INDIAN CUISINE for some of the area's best Indian fare

HANOVER PANCAKE HOUSE serving breakfast-and-lunch diner classics since 1969

JULI'S COFFEE & BISTRO for breakfast, lunch or the perfect pick-me-up

LUIS' PLACE for an intimate fine dining experience

ROYAL SOCIETY a chic downtown spot for wine, cocktails, and bites!

TACO for a delicious variety of dips, tacos, cocktails and more

THE WEATHER ROOM for classic American fine dining with a contemporary ambiance

THE WHITE LINEN for multi-course fine dining with an upscale vibe

THE PENNANT for a burger and milkshake at Topeka's #1 family fun restaurant

SPAWN INN for nerdy milkshakes and themed cocktails.

WHERE TO GRAB A SPECIAL TREAT:

- **CASHMERE GOURMET POPCORN** for locally popped delights
- **HAZEL HILL CHOCOLATE** for small-batch, hand-made sweet treats

WE CAN'T WAIT TO SEE YOU!

PROVIDING A WORLD-CLASS
NATURE & WILDLIFE EXPERIENCE



📍 635 SW Gage Blvd., Topeka, KS 66606

📞 785-368-9180

🌐 Topekazoo.org

topeka zoo
& conservation center





EQUALITY HOUSE

In March 2013, the vibrant Equality House arose in Topeka's Westboro neighborhood as a symbol of compassion, peace and positive change. Serving as headquarters for the LGBTQ+ advocacy arm of the nonprofit Planting Peace, Equality House is a visual reminder of the organization's commitment to equality and inclusivity — values Topeka holds dear.

Visit Equality House on your next trip to Topeka to take in the local landmark and snap a photo in front of its rainbow exterior. Visitors are also welcome to leave a message of encouragement and support on the house's north-facing exterior wall. While there, don't forget to check out the Mott House next door! The Mott House was painted in 2016 to mimic the transgender flag. In 2019, the house was given its current name to honor the late Stephanie Mott, Kansas' most notable transgender activist.



Topeka Pride and Pride Kansas are nonprofits that call the capital city home. Both host events year-round, including Pride festivals, drag shows, book clubs, hikes and more. Pride Kansas held its first statewide Pride festival in 2022, and

Topeka Pride organized its inaugural Pride Palooza in 2024. To learn more and keep up with events, follow Topeka Pride and Pride Kansas on social media, and check social media!





Topeka Performing Arts Center

Topeka Civic Theatre

Jayhawk Theatre

PERFORMING ARTS

With venues big and small, Topeka is no stranger to the performing arts! Read on to learn about some of the stages that call the capital city “home.”

HISTORIC JAYHAWK THEATRE

Downtown’s Historic Jayhawk Theatre was built in 1926, opening as a deluxe entertainment palace. Restoration of the official State Theatre of Kansas is underway, allowing visitors to see this historic site in a state of transition. Visit JayhawkTheatre.org to learn more about this aging beauty’s return to its former glory as a vibrant entertainment venue hosting a variety of main-stage acts.

TOPEKA CIVIC THEATRE

Founded in 1936, the Topeka Civic Theatre claims to be the oldest continuously operating community dinner theatre in the country! With both dinner and non-dinner shows, as well as bar service and delightful desserts, you’ll want to catch a show on the TCT mainstage during your next trip to Topeka. From improv comedy to coveted fresh-from-Broadway productions, TCT is a Topeka treat. For more, visit TopekaCivicTheatre.com.

STORMONT VAIL EVENTS CENTER

From demolition derbies and sporting events to country concerts and Cirque Du Soleil, Stormont Vail Events Center hosts a variety of experiences appealing to many different audiences. Annual exhibits and fairs are also held here throughout the year. For more, look for the longer “Stormont Vail Events Center” entry on page 81 in this guide, or visit StormontVailEventsCenter.com for the latest lineup.

WHITE CONCERT HALL

Housed on the Washburn University campus, White Concert Hall is home to the school’s music department, as well as the Topeka Symphony Orchestra, the Topeka Festival Singers, the Sunflower Music Festival, and other university and community events. Visit Washburn.edu to learn more about this venue and various cultural offerings across campus.

TOPEKA PERFORMING ARTS CENTER

Suited to accommodate Broadway touring companies, world-class orchestras and major dance companies, the Topeka Performing Arts Center is a multi-purpose venue that hosts large concerts, plays, musical performances and more in an elegant, Art-Deco style space. For a calendar of upcoming events, visit TopekaPerformingArts.org.



White
Concert
Hall



EVERGY PLAZA

Located along Kansas Avenue in the heart of downtown Topeka, this unique outdoor entertainment venue hosts a bit of everything! No matter the season, you’re bound to find something to enjoy. See page 80 for more on the plaza and its upcoming events.



Stormont Vail Events Center

VISUAL ARTS

From outdoor installations to galleries galore, Topeka has many art offerings to enjoy! Here are a few you won't want to miss.

SCULPTURES & ART INSTALLATIONS

Sculptures and public art installations provide pops of color and history. Walk through downtown to see statues of prominent Topekans; stroll by the Kansas Capitol to spot historical figures like Dwight D. Eisenhower and Abraham Lincoln; and explore NOTO to find an array of installations that make you stop and admire. Visit Washburn University's campus for the Rita Blitt Art Gallery and Sculpture Garden, featuring work by award-winning artist Rita Blitt. Multiple Blitt sculptures call Topeka "home," contributing to the nearly two dozen art installations found throughout Washburn's campus.

GALLERIES

Topeka has many local art galleries to explore! Our favorites include Stephen Smith Gallery, NexLynx Gallery, the NOTO Arts Center, ArtsConnect and Amused. The Topeka and Shawnee County Public Library also features rotating exhibits in its Sabatini Gallery. For more galleries, visit ArtsTopeka.org.

MULVANE ART MUSEUM

Housing a collection of about 5,500 objects from around the world, the Mulvane Art Museum at Washburn University is one of the oldest accredited art museums west of the Mississippi River. Learn more at MulvaneArtMuseum.org.

MURALS

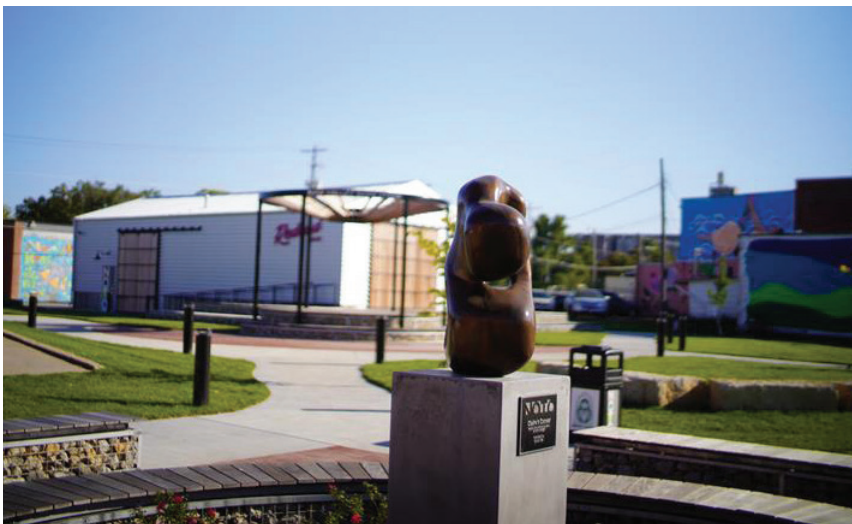
Be on the lookout for murals throughout the capital city! We recommend stopping in downtown Topeka and the NOTO Arts & Entertainment District, before making your way over to the Great Mural Wall of Topeka, just behind the Stormont Vail Events Center, for a 360-degree, storyboard-like display. Don't miss the inspiring mural at the Brown v. Board of Education National Historic Site, and visit ArtsTopeka.org/mural for more colorful locations!

TRUCKHENGES

An eclectic mix of recycled art and nature sanctuary, Truckhenge is an ode to the world-famous Stonehenge. This outdoor gallery sits on a family farm, so visitors should book tours in advance. Visit TruckhengeFarm.com to learn more. For a one-of-a-kind taste of Truckhenge, visit during Topeka's Backyard Musicfest! Find more info at TopekasBackyardMusicFest.com.

SCULPTURES

Don't miss the NOTO Arts District's rotating sculptures, found in front of the NOTO Arts Center, in Redbud Park, and in NOTO's Breezeway Park! Typically displayed for two years at a time, these sculptures are diverse in style and media.





NOTO

NOTO



Truckhenge



Rita Blitt



Ted Ensley Garden

Shawnee North
Aquatic Center



Kaw River State Park

OUTDOORS

Topeka boasts many parks, trails and green spaces. Whether you're looking for exercise or fresh air, celebrate the beauty of nature in the capital of Kansas!

TRAILS

Topeka offers more than 60 miles of connected trails! For a more rugged experience, we suggest the hilly, winding trails of Kaw River State Park, located next to the Kansas Governor's mansion. In North Topeka, just off Highway 24, Iliff Commons offers several miles of trails that have been carved through native prairie and woodlands. For a paved path, we recommend Shunga Trail, a nearly 20-mile-long stretch running across Topeka. Finally, Shiloh Woods in Auburn, Kansas offers wheelchair accessible nature trails, ensuring Kansas' beauty can be enjoyed by all.

PARKS

The Topeka area features over 100 parks. Historic Gage Park stretches across 160 acres and features the Topeka Zoo, a 2-mile paved fitness loop, rose garden, the Kansas Children's Discovery Center, and an operational miniature train. Looking for a scenic waterfront? Then, explore Lake Shawnee, which boasts the popular Adventure Cove and seven miles of paved trails. For something a bit more lowkey, enjoy Crestview Park, home to two disc-golf courses and a portion of the expansive Shunga Trail. For a complete list of local parks, visit parks.snco.us.



Midwest Health Aquatic Center

POOLS, SPLASH PADS & AQUATIC CENTERS

Each Memorial Day weekend, local pools and aquatic centers open for business! They include Blaisdell Family Aquatic Center, Midwest Health Aquatic Center and Shawnee North Family Aquatic Center, as well as several community pools. And don't sleep on the area's splash parks, including Dornwood Spray Park, Jackson Spray Park and the downtown splash pad at Evergy Plaza.



KAY'S GARDEN

See nature come to life at the Kay McFarland Japanese Garden! Located at the Topeka Zoo, this Japanese water garden is one of only a few of its kind in the U.S. The final design was created by garden master Koji Morimoto, who handcrafted pieces of the serene scene himself.



BETTER WATER BETTER LIVING

Culligan Water of Topeka is
your trusted partner in
comprehensive water solutions.

QUALITY WATER STARTS HERE:

(785) 267-0512
topekaculligan.com



WITH CULLIGAN YOU CAN ENJOY:

- 💧 Local water expertise & a free in-home analysis
- 💧 Latest filtration technology for homes & businesses
- 💧 24/7 on-call service & salt and water delivery



parks.snco.us 785-251-6800

Lake Shawnee 3137 SE 29th St



- 410-acre recreational lake • Ted Ensley Gardens • 7-mile pedestrian/bicycle trail • Golf Course • Campground • 1,100-acre park Lake Shawnee Adventure Cove • Boating • Fishing • Skiing

Gage Park 635 SW Gage Blvd



- Historic Carousel • 1-mile Mini-Train • Blaisdell Family Aquatic Center • Reinisch Rose Garden • Westlake Pond • Topeka Zoo • Helen Hocker Theater • Kansas Children's Discovery Center

Family Park 2201 SW Urish Rd



- 16 lighted pickleball courts • Fitness loop • Greenspace • Open-air shelter • Destination playground • Adaptive equipment • Bathrooms • Midwest Health Aquatic Center

96 Shelter Rentals

3 Golf Courses

10 Aquatic Facilities



Kaw River State Park

KANSAS RIVER

The Kansas River, or Kaw River, stretches across the Capital City and has inspired travelers for generations. The river flows west to east for more than 170 miles before feeding into the Missouri River, the longest in North America. Topeka visitors enjoy multiple access points, including the Kaw River State Park. A convenient boat ramp near river mile 90 provides river access to canoes, kayaks and other small craft. Recent work on the river has helped create safer passages for waterway users. Enthusiasts can plan a unique experience on the river by visiting KawRiverAdventures.com. Kayak and canoe rentals are also available through KawValleyCanoeRental.com and DirtyGirlAdventures.com, which is known for their group excursions.

MOUNTAIN BIKING

A few Topeka trails offer heart-pounding cycling for bike enthusiasts, or the whole family. No matter your skill level, get ready for a thrilling challenge. Favorite biking trails among locals include:

- Kaw River State Park (Red Trail)
- MacLennan Park (Yellow & Red Trails)
- Azura Trail at Skyline Park

BMX

Heartland BMX is the sport's Topeka hub. Since the 1980s, Crestview Park has been home to the city's premier dirt BMX track, which hosts American Bicycle Association-sanctioned BMX races and clinics.



Kansas River

SCAN ME



- Virtual Golf Leagues
- Driving Range
- Food & Drinks
- Open 7 Days a Week!
- New Amenities!



- Arcade
- Fitness Area
- Laser Tag
- Swimming
- Trampolines
- and more!

Great**PLAY**

BECOME A MEMBER TODAY! | WWW.GREATLIFETOPEKA.COM

CAMPING AND GLAMPING

Topeka offers several options for camping, including Capital City KOA, the area's top-rated campground. The local KOA features full-service RV sites, complete with free cable TV and Wi-Fi access. Another great option is the Lake Shawnee campground, which sports over 100 campsites for RV and tent-dwelling campers. All sites have electrical hookups, with handicap accessible options available. A natural lake cove, or swimming beach, is located by the campground and open to registered campers between sunrise and sunset.

Other notable camping locations in Topeka and the surrounding area include:

- Forbes Landing RV Park
- Topeka Hilltop Campground
- Perry State Park
- Deer Creek Valley RV Park

SKYLINE TRAILS AT BURNETT'S MOUND

Take in spectacular views of the capital city from atop Burnett's Mound at Skyline Park, the city's highest point of elevation! The park is home to popular hiking and biking trails. Many people also recall the area's cultural connection, as Burnett's Mound is named after Potawatomi Chief Abram Burnett, who led fellow Potawatomi tribe members from their settlement in Indiana to what is now Topeka.



*From the Top
Glamping*

*Burnett's
Mound*







GOLF

Topeka is home to several premier golf courses and resorts—so get ready to book a tee time, grab your clubs, and enjoy a day on the fairway! Enjoy Cypress Ridge Golf Course, Lake Shawnee Golf Course, Topeka Country Club, Firekeeper Golf Course (at nearby Prairie Band Casino), and various GreatLIFE Topeka locations, among others.

If weather conditions aren't to your liking, step inside while still hitting the green! The Tee Box, 8 Iron Therapy, and TopGolf Swing Suites at Prairie Band Casino offer indoor simulated golf experiences that will bring you back for more. A covered driving range at TopCITYGolf will also help you steer clear of the elements. Adding even more fun to the mix, The Tee Box features a curated menu of golf-inspired fare, and 8 Iron Therapy partners with select local restaurants to quell your hunger mid-round.

DISC GOLF

No matter where you are in the city, you're only a backhand throw away from a great disc golf course. The capital city offers about seven different disc golf courses that range in difficulty to serve seasoned players and newbies alike.

18 HOLE COURSES:

- Big Shunga Park
- Crestview Park East
- Crestview Park West

9 HOLE COURSES:

- Edgewater Park
- Rice Park
- Shunga Glen Park

MINI GOLF

If discs aren't your thing, gear up for a round of mini golf! Whether you desire to shoot around dinosaurs and giant spiders or putt by the glow of neon lights, Topeka has what you're looking for. Check out the following putt-putt locations:

- **SPORTS CENTER** 6545 S.W. 10th Ave.
- **MINI GOLF** a new neon black-light experience inside West Ridge Mall
- **WEST RIDGE LANES AND FAMILY FUN CENTER**
1935 S.W. Westport Drive
- **TOPCITYGOLF AT GREATLIFE NORTH**
350 N.E. US-24 Highway
- **CORNER21 CO. SPORTS**
7523 S.W. 21st St.

DONALD ROSS COURSE

Topeka is home to the only Donald Ross course in the state of Kansas. A legendary golfer and golf-course designer, Ross designed the Shawnee Country Club course in 1921. He is known for designing nine of the top 100 golf courses in the United States, and his courses have a distinctive style. The original drawings by Ross were recently located, and the Shawnee Country Club course is being returned to its original design. The club is open to the public.



Sports Center



Donald Ross
Course



Ta Co.



The Pennant



Iron Rail



The Weather Room

ENRICHING DOWNTOWN TOPEKA KS

ONE PLATE AT A TIME





SHOPPING

DOWNTOWN

Newly revitalized and ever growing, historic downtown Topeka is home to restaurants, retail, entertainment, nightlife and more. Featuring the stunning Kansas Statehouse, visitors often explore the capitol building grounds before strolling to nearby Kansas Avenue. The avenue is anchored by Everygy Plaza, an outdoor venue offering concerts, festivals, and a splash pad that turns into a dynamic water-and-light show in the evenings. Nearby sit the historic Jayhawk Theatre and Topeka Performing Arts Center, drawing performers from near and far. Dining downtown is always a hit, with local favorites like The Celtic Fox, Iron Rail, The Pennant, and more. Snag unique finds at specialty shops and boutiques like Hazel Hill, The Mix, and Prairie Glass. Looking for an upscale evening vibe? Try Royal Society, The Weather Room, or The White Linen. The options don't stop there! See page 32 for a complete list of downtown draws.

WESTBORO MART

Westboro Mart is one of the oldest shopping centers in Topeka and features stunning Mission and Spanish Colonial Revival architecture inspired by the Country Club Plaza in Kansas City. Enjoy bites and pours at Salut Wine and Cocktail Lounge, admire floral arrangements and gifts at Porterfield's Flowers, or redesign your home at SOHO Interiors!

NOTO ARTS & ENTERTAINMENT DISTRICT

The NOTO Arts District is central to Topeka's arts community. Known for its murals, galleries, and retailers, the district boasts over 50 murals and outdoor sculptures. It also features live performances at Redbud Park and quaint indoor venues. Discover your new favorite book at Round Table Bookstore, a vintage find at Two Days Market, or a cool collectible at Kaw River Rustics! Learn more about the district on page 26 and at [ExploreNOTO.org](https://www.explorenoto.org).

MORE SHOPPING SCENE SPOTS:

- Brookwood Shopping Center
- Fairlawn Plaza Shopping Center



WEST RIDGE MALL

Topeka's West Ridge Mall, which opened during the shopping-mall boom of the 1980s, is now under new ownership, with exciting renovations on the horizon! Local entrepreneurs Cody Foster and David Callanan bought the mall in 2023 and have big plans to turn this once-bustling shopping center into a modern, mixed-use, indoor-outdoor shopping and entertainment district that could include new retail, fresh restaurant concepts, leisure and self-care services, fun family activities, live entertainment, company headquarters, and so much more. Keep an eye out for updates on this cutting-edge development, as it's sure to be a sought-after Topeka treat once complete!



Downtown



Round Table Bookstore



Porterfield's Flowers

AREA ARTISANS

CALM CATALYST

Calm Catalyst was born from a deep-rooted passion for bringing a sense of calm to life's chaos. Founder, Erin Young, designs meticulously crafted journals and planners that create opportunities for growth and help users stay on track with goals. Find and order your next planner at CalmCatalystLLC.com!

ESSENTIAL HENNA

Born from an art form that runs in the owner's family, Essential Henna has gone viral on social media for the free henna crowns it offers to those who have lost their hair due to cancer. Owner Vidhi "V" Heiland has been perfecting her henna recipe for more than a decade and hosts sessions at her private home studio. Whether you're going for a crown or wanting a unique design elsewhere, learn more and book today at EssentialHenna.com!

INSPIRE & COMPANY CANDLES

Inspire and Company Candles is a small, black-owned candle business that seeks to inspire others through special scents and organic ingredients. Owner Ebony White uses natural cotton wicks and 100% pure soybean wax in her candle making. Explore the variety of products at InspireandCoCandles.com!

MORNING LIGHT KOMBUCHA

Indigenous and female-owned, Morning Light Kombucha is produced in nearby Hoyt, Kansas. This kombucha, made with locally sourced ingredients, can be found for sale around Topeka, and is even available for local delivery! Find them at MorningLightKombucha.com.

SASSY BASSET BISCUIT CO.

Inspired by a hungry Basset Hound, Sassy Basset owner Sherri Moore started baking dog treats with all-natural and locally grown ingredients. These treats will have your furry friends wagging their tails! Find them at SassyBassetBiscuitCo.com.

MORE MAKERS

With so many makers and artisans in the area, we can't possibly name them all! You'll find others at places like the Downtown Topeka Farmers Market, and check out a few more below. Also hop over to VisitTopeka.com for new local favorites.

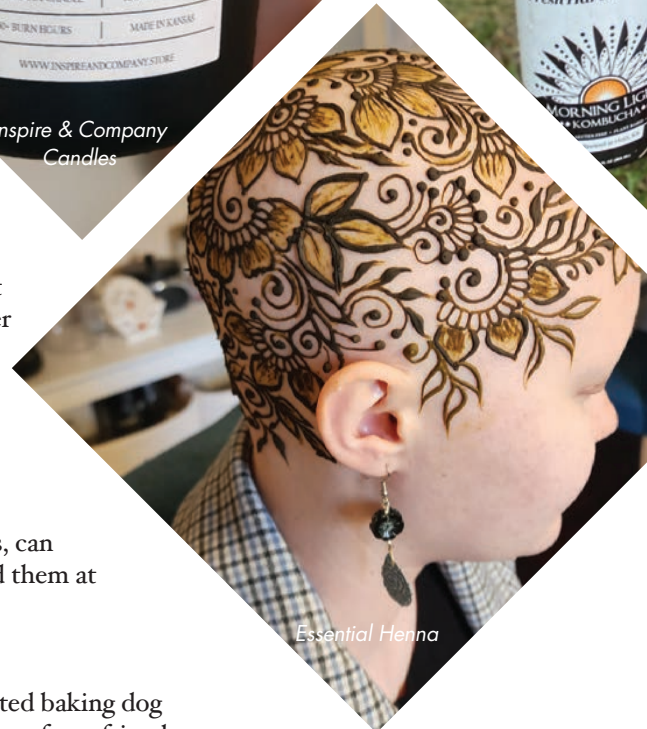
AO NOLA PRALINE CANDY A taste of New Orleans

BELLAVITA ORGANIC BODY CARE Original beauty products made in-house

CLAY LIKE ME handmade earrings and accessories

MADE MAKER POTTERY Home-thrown, hand-carved and carefully glazed

TOP CITY FLOWER TRUCK Meet Fiona, a 1964 Ford F100



Calm Catalyst



Morning
Light
Kombucha



ASTERA FRESH CUT BLOOMS

Flowers with a personal touch are Astera's bread and butter! Available mid July through mid October, the beautiful blooms used in Astera bouquets are grown right in the owner's backyard, ensuring fresh flora you won't find at your typical supermarket. Learn more and plan your purchase at AsteraBlooms.com.

TOPEKA FARMERS MARKET

A time-honored tradition! The Downtown Topeka Farmers Market is held every Saturday, 7:30 a.m. to noon, April through October in the parking lot at SW 6th Avenue and SW Harrison Street. Browse baked goods, handmade items, and fresh fruits and veggies grown and crafted by Kansas farmers and makers. For more great produce and homemade goodness, check out the Monday Farmers Market at the Topeka and Shawnee County Public Library, running May through October 7:30-11:30 a.m. And don't miss the Breadbasket Farmers Market, open Saturdays 7 a.m. to 1 p.m. April through November outside Furniture Mall of Kansas at West Ridge Mall.



FLEA MARKETS

TOPEKA VENDORS MARKET

Topeka Vendors Market, a refurbished warehouse packed with booths by area makers and collectors, features an eclectic selection of antiques, décor, vintage, and upcycled items. The market, also home to a cafe, is located a block east of the Ramada Hotel in downtown Topeka. With multiple floors full of treasures, your next great find is just waiting to be discovered!

Topeka Vendors Market

OWLS NEST

Advertised as Topeka's largest antique mall and flea market, Owls Nest features over 250 vendors at two Capital City locations. Treasure hunters, get ready! Seasonal styles, fun and funky collectables, new and vintage furniture, games galore, and a bevy of nostalgia—you'll find a little bit of everything here. Locations include 2901 SE Adams Street and 3411 SW Topeka Boulevard.

OTHER SPOTS TO CHECK OUT:

- Crafter Crafters
- The Market at Macvicar
- Kaw River Rustics
- Two Days Market (only open on the first Friday and Saturday of the month!)

Owls Nest

NOTO Arts District 2025



Be Part of the Excitement!

NOTO First Friday Art Walk

Join us every month for First Friday! Live music in Redbud Park features local bands 6 – 9:00p.m. (Live music held March-Nov.)



Redbud Youth Festival April 1-May 4

A vibrant celebration of artistic expression and creativity, showcasing the talents of young artists aged 5 to 18. Featuring a Youth Art Exhibition, Youth Talent Showcase, Youth Art Expo, and the annual NOTO Chalk Walk.

NOTO Summer Concert Series 3rd Friday's May-Sept. 6-9:00p.m.

Featuring a regional headlining musician with a youth opener, food trucks, a beer garden, at Redbud Park.



Looking Ahead

Day of the Dead Festival | First Friday Nov. 7. 2025

Winter Celebrations | Sat. Nov. 29. 2025

For more information:
explorenoto.org/calendar





The Wheel Barrel

Jeremiah Bullfrogs

Celtic Fox

LOCAL FAVORITES

As Topeka's foodie scene continues to grow, the city holds true to some no-fuss staples that have locals coming back for more. They're the types of joints that may be unassuming from the outside but repeatedly rake in those "Best of Topeka" votes.

For laid-back vibes paired with burgers and fries, head over to

Jeremiah Bullfrogs or Johnny's Tavern. For more classic bar-and-grill fare, check out Ichabods Grille near Washburn University or Skinny's Sports Bar & Grill near Gage Center. For a down-home diner-inspired breakfast, stop by Banjo's Cafe, Bradley's Corner Cafe, or Hanover Pancake House. Banjo's is known for

its biscuits and gravy, and Bradley's claims some of the best pies in town!

These are just a few of the local favorites we invite visitors to check out. Read on to explore unique fine dining options, diner and drive-in staples, global cuisine, breweries, and more!

MORE FAVORITES (WITH A DISTINCT FLAIR!):



The Pennant

THE PENNANT

The Pennant buzzed with traffic through the 1950s and 60s. Though the original Pennant restaurant closed in 1967, its legacy lives on today through this modern establishment's retro aesthetic and and vibes!

THE TEE BOX

This golf-inspired bar and restaurant is the perfect place for golf enthusiasts and foodies alike. Whether you're looking to practice your swing in one of their simulation bays or enjoy craft cocktails and fairway-inspired bites, The Tee Box has something for everyone.

THE WHEEL BARREL

Go for their signature sammies and house-made kettle chips (seriously, the best grilled cheeses in town!); stay for the eclectic atmosphere and extensive drink menus.

The Tee Box

FINE DINING

Don't get us wrong, we love a local dive—but when you're dressed to impress and want to sample some of the finest fare in Topeka, look no further than these dining establishments!

CHEZ YASU

This cozy French restaurant in the heart of Topeka features elegant dining in a bistro atmosphere. Chez Yasu's exquisite dishes and minimalist plating let each meal's aroma and taste take center stage. Alongside entrees like rack of lamb and roasted duck, the restaurant's yellow squash soup has been described as liquid gold! For more, visit ChezYasuFrenchRestaurant.com.

NORTH STAR STEAKHOUSE

With nearly a century of history behind it, North Star Steakhouse is the spot for rustic fine-dining. This North Topeka staple began as a supper club in the early 1940s and has grown into the area's prime spot for steak and friendly service delivered in a family-oriented atmosphere. Enjoy wine or beer with your steak, or scour North Star's "Prohibition Cocktail Menu" for something timeless. If you're still hungry, the North Star bread pudding is a must to end your night!

THE WHITE LINEN

With a rotating menu that changes monthly, The White Linen is a French-inspired fine-dining experience serving an eclectic mix of New American and traditional French cuisine. Delight your taste buds with a five-course meal during The White Linen's usual dinner service, or stop by for a coveted tapas night on the first Tuesday of each month. Reservations are highly recommended for this downtown Topeka staple! To view the latest tasting menu or make a reservation, visit TheWhiteLinen.com.



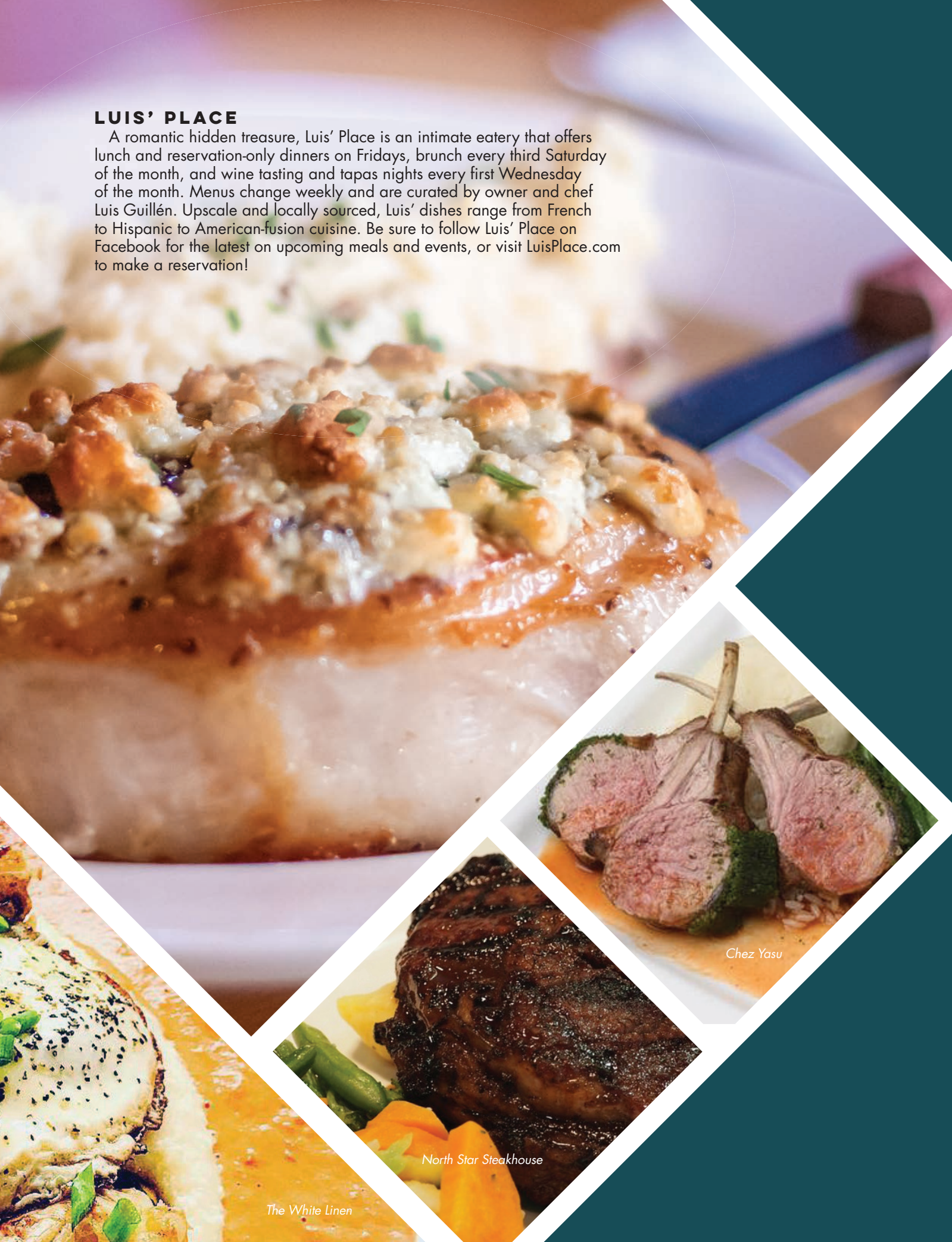
THE WEATHER ROOM

The Weather Room is back! In 2023, The Weather Room reopened as the flagship restaurant of the Cyrus Hotel in downtown Topeka. This eatery, with classic upscale American fare, features an extensive wine list, along with both classic and seasonal cocktails. Diners can expect a delightful menu and superior service that is sure to appease even the pickiest of palates.



LUIS' PLACE

A romantic hidden treasure, Luis' Place is an intimate eatery that offers lunch and reservation-only dinners on Fridays, brunch every third Saturday of the month, and wine tasting and tapas nights every first Wednesday of the month. Menus change weekly and are curated by owner and chef Luis Guillén. Upscale and locally sourced, Luis' dishes range from French to Hispanic to American-fusion cuisine. Be sure to follow Luis' Place on Facebook for the latest on upcoming meals and events, or visit LuisPlace.com to make a reservation!



Chez Yasu

North Star Steakhouse

The White Linen

MEXI-KANSAS!

Topeka was founded in part by Mexican immigrants who came to build railroads here in the late 1800's. Be sure to check out the historic Oakland Neighborhood and East 6th District, which serve as the heart of the city's Latino community. To start your day, stop by Oakland Bakery! Nestled in a small building off Seward Avenue, the bakery offers authentic Mexican baked goods. You can find a variety of pan dulce, such as conchas, orejas, empanadas de fruta, polvorones and more. Get there early to snag your favorites, or get a quote on their website for larger orders. If you're in the mood for something quick but still want to impress the camera, look no further than Casserolle. With elote that overflows each cup and delightful manguanadas (a frozen mango treat featuring chamoy sauce and tajin), Casserolle is worth craving.

ALSO CHECK OUT THESE SPOTS:

CAMECUARO MEAT MARKET
RESTAURANTE OAXAQUEÑO
PANADERIA MONTERREY
ROSI'S FOOD
TACOS EL SOL
TAQUERIA EL COYOTE
TORTILLERIA JUAN 3:16
ZOILA'S CAFÉ



Rosi's Food



JEREMIAH BULLFROGS



BAR & GRILLE

**Locally owned & operated
since 1993.**

**Where the locals go.
Best sports bar with
over 80 tvs.**



**2827 SW Wanamaker Rd.
Topeka, KS
785-272-3764**



DOWNTOWN TOPEKA'S FRIENDLIEST NEIGHBORHOOD BAR & GRILL

GREAT FOOD ● PRIVATE EVENT SPACES ● LIVE MUSIC

**A Great Place To Gather With Family & Friends
Over 50 Handmade Menu Items**



**"OH MY!
INCREDIBLE
MENU!"**

PUB FAVORITES

Authentic Fish & Chips
Over-The-Top Nacho Platter
Reuben Quesadilla
Voodoo Fries
Blackened Spinach Chicken
The "Dream Burger"
N.Y.C. - Style Reuben
Chicken Strawberry Salad
Fried Bread Pudding

**"BEST
REUBEN
EVER!"**



TheCelticFox.com



**"STAFF WAS
AWESOME!"**

118 SE 8th Avenue - Directly across from the Statehouse - 785-235-2138

DINERS, DRIVE-INS, AND DIVES

Since 1948, Bobo's Drive In—which was featured on the hit show “Diners, Drive-Ins and Dives” in 2008—has been known for its popular car-side service, with carhops taking your orders curbside. Also featuring an old-fashioned lunch counter inside, Bobo's Drive In continues to be a local favorite. Look for the neon marquee near their building, and get ready for a treat. You can't go wrong with a cheeseburger, fries and milkshake, or go for their “famous apple pie”!

OTHER MUST-VISIT DIVES:

PRIZE PACKAGE

This local joint has a huge following. Since there isn't seating on site, bags full of greasy goodness are typically taken to go. Make sure to get there early or call in your order if you're wanting food fast, as the lunch line gets long. **LOCAL**

TIP: Order their pepper jack cheese balls for a fired-up treat!

THE PAD

Owned by the same family since 1961, this North Topeka staple is known for their Rocket Meal, a burger or pork tenderloin served with curly-q fries and a drink. The restaurant features original retro décor and serves everything from chicken fried steak and homemade chicken and noodles, to burgers, curly fries and taco salad.

THE SHACK

Located by Lake Shawnee, this local sports bar features spicy fried cauliflower and some of the best burgers in town. **LOCAL TIP:** Try their cheese dip with your fries!

The Pad



FOOD TRUCK FRENZY

Catch these food trucks, and many more, around town for delightful bites on the go! To keep up with our local food trucks, search for “Topeka's official food truck group” on Facebook or download the “Mobile Munch” app on your phone to track truck locations in real time.

And don't miss the annual Topeka Food Truck Festival at Gage Park each August!

LA CREPERIE CO. – From their chicken & waffles special to sweet crepes like s'mores Nutella or peaches & cream, this food truck is known for serving up enticing treats! Find La Creperie Co. on Facebook to see where they'll be setting up shop.

FLAVOR WAGON – Here for the flavor! Visit FlavorWagon.com for a look at their menu and more, and find them on Facebook at Flavor Wagon_785 to learn where they'll be parked while you're in town.

K-TACOS – Home to some of the best street tacos in town, you'll often find this truck parked at 801 S.W. 6th Ave. until 9 or 10 p.m., up to six days a week (closed Sundays)!



GLOBAL FLAVOR

Traverse the globe without ever leaving Topeka! The capital city is home to a variety of people and food, adding to the community's diverse dining scene and culture. From Thai to Indian to Mediterranean and more, local eateries offer something for every palate. Check out a few favorites below!

ASIAN FUSION

Oriental Express
Ling's Bistro
Saigon Restaurant

FRENCH

Chez Yasu

INDIAN

Globe Indian Cuisine
Indian Bistro
Monsoon Indian Grill
Pal Indian Cuisine

JAPANESE

Kiku Japanese Steakhouse
Mizu Sushi
Yuki Restaurant of Japan

ITALIAN

LaRocca's Pizza
Paisano's Ristorante

MEXICAN

El Centenario
El Mexicali
El Ranchito
Los Charros
Tacos El Guitarron (*food truck*)

THAI

Jong's Thai Kitchen
Thai Table Restaurant
Tuptim Thai

FOOD FOR THE SOUL

7.8.5 KITCHEN

SHOPPER'S KITCHEN

SOUL FIRE FOOD CO.

COFFEE CENTRAL

Topeka is no stranger to great coffee! Blue Jazz Coffee Roasters, Joylight Coffee Roasters, and PT's Coffee all call the capital city home, with multiple spots serving their local roasts. Check out the following coffee hotspots across the city:

CIRCLE COFFEE CO.

A hip neighborhood coffee bar, this hotspot features freshly baked treats and specialty sips on tap, as well as top-notch espresso and superb service. Stop by in the evenings Thursday-Sunday to catch the new smashburger-and-cocktails joint Thursday Club popping up!

COFFEEHEAD

Featuring a rotating seasonal menu, this modest establishment packs a punch! They're known for creative coffee drinks, boba and milk teas, house-made sandwiches, and delightful desserts.

BLACKBIRD ESPRESSO BAR & BISTRO

A local favorite for breakfast and lunch, here you can snag your typical coffee or an after-work beer or glass of vino. Check their pastry case for tempting treats, or look out for mouth-watering monthly specials!

STILL THIRSTY OR IN NEED OF A MUNCHIE?

- **COFFEE BAR**
perfect day-to-night spot near Washburn University
- **DIALOGUE COFFEE HOUSE**
coffee with a cause, BIG monster cookies
- **HIGHER GROUNDS COFFEEHOUSE & DELI**
great patio, friendly service
- **JUDEE'S COFFEE**
house-made syrups, homemade pop-tarts
- **MILK & HONEY COFFEE CO.**
dine-in or drive-through, community minded



Circle Coffee Co.




PT's Coffee





The Weather Room

The Principal's Office



The Wheel Barrel

SIPS AND SWIGS

It's 5 o'clock somewhere! Whether you're looking for a change of pace or a night on the town, belly up to the bar with us to try some of the local libations that have visitors raving. From craft beer to wine to cocktails, there's something for everyone.

THE KNOX COCKTAIL BAR & LOUNGE

This modern, sophisticated lounge features cocktail classics, alongside a rotating-signatures selection. Wines, a bourbon reserve, and select beers can also be found here. Time to sit back, relax, take in the ambiance and sip on your favorites!

THE PRINCIPAL'S OFFICE

The Principal's Office is a speakeasy hidden near Salut Wine & Cocktail Lounge, in Topeka's Westboro Mart. Find the paddle on the door to be transported underground, where you'll be treated to delightfully themed fare in a prohibition-style atmosphere.

THE ROYAL SOCIETY

This swanky new downtown spot features a carefully curated mix of wine, champagne and charcuterie, alongside classic cocktails and memorable bites. The perfect upscale spot for a toast!

THE TEE BOX

Known for indoor golf games and delicious bites, this downtown bar and restaurant continues to solidify itself in the local cocktail scene. Don't sleep on handcrafted cocktails like their spicy mezcal margarita, and be sure to ask about their extensive tequila selection!

THURSDAY CLUB

This neighborhood gathering spot pops up on the weekends, serving scrumptious smashburgers and craft cocktails. It's perfect for a casual date night, and family friendly. Go for an order of fried plantains, and don't sleep on their Thursday Sauce! Check out ThursdayClubTopeka.com for more.

THE WHEEL BARREL

This local favorite flaunts a cocktail menu with all the classics, alongside some show-stopping seasonal drinks. You'll swoon over the extensive beer and spirit menus, including a great whiskey selection.

VINO

Below are a few of our favorite spots for a glass of wine or bubbly! For nearby wineries, check the "regional attractions" section on page 31 of this guide.

• SALUT WINE AND COCKTAIL LOUNGE

Sip the night away, or enjoy a fabulous brunch, at this Topeka wine bar! Go for the extensive drink selection or tasty tapas like their "Hot Artichoke Dip."

• THE WHITE LINEN

A fine-dining establishment known for its wine list! Enjoy a tasting menu that changes monthly, with the option to add a wine pairing to each course. Visit TheWhiteLinen.com for more.

• THE WEATHER ROOM

For wines you may not find elsewhere, The Weather Room downtown, inside the Cyrus Hotel, is your go-to spot!

• CHEZ YASU

Topeka's premier spot for French cuisine, Chez Yasu offers a variety of fine wines and a full bar to enjoy alongside classic dishes like duck, lamb, and escargots.

CHEERS TO BEER

Whether you're searching for an afternoon sipper or hoping for a hearty meal and a brew, check out Topeka's breweries and brew-forward entertainment joints and restaurants for a taste of the city's beer scene!

785 BEER COMPANY

This family-owned brewpub is great for beer enthusiasts, pizza lovers and pickleball players alike. Book your court at 785BeerCompany.com, or go solely for the food and drinks!

THE BLIND TIGER BREWERY & RESTAURANT

This Topeka staple has brought home over 25 medals for its award-winning brews. Go for the barbecue, one of their flagship beers or a seasonal brew. Enjoy a Tiger Bite IPA, and a portion of your proceeds will go to support the Topeka Zoo's Sumatran Tiger Conservation Campaign!

HAIRY BEAST BREWING

This nanobrewery is Topeka's newest! Opened in 2023, it offers select house brews alongside a few guest taps. Also check out their food truck collaborations for local bites, like mouthwatering BBQ and tacos, served patio-side. Pets welcome!

HAPPY BASSET

With two Topeka locations—Happy Basset Brewing Co. and Happy Basset Barrel House—this brand is dedicated to “brewing beer for dog's best friend!” Catch live music and food trucks at the barrel house on weekends, or stop by either location for some of the best brews in town; dogs welcome!

IRON RAIL BREWING

Iron Rail in downtown Topeka pays homage to the city's rich railroad history. From the Three Sunken Engines IPA to the Great Overland Station Kolsch, these beers are as special as the stories that inspire them.

IN GOOD SPIRITS

Where spirits and sport collide.

AXE & ALE

Throw axes over a pint, or check out their craft cocktails and frozen wine slushies!

THE TEE BOX

Much more than golf, here you can practice for par, or simply sip and snack the night away.

THE PENNANT

Arcade? Check. Bowling? Check. Drinks AND good grub? CHECK.

SPAWN INN

Enjoy cocktails and milkshakes (with or without the booze!), while gaming galore.



Axe & Ale



The Blind Tiger



Iron Rail Brewing

Happy Basset Brewing Co.

WASHBURN
UNIVERSITY

MANY PATHS.

**ONE
WASHBURN.**

**THERE'S NO LIMIT
TO WHAT WE CAN DO.**

No matter what your goals are, every aspect of the Washburn experience is designed to help you find the right path and make your dreams attainable.

As a public university, we take pride in serving our students — and our community.

When Washburn students thrive, Topeka and Shawnee County thrive, too.

We're driving success for students and for the place we call home.

It's a great time to be an Ichabod.



WASHBURN.EDU 785.670.1030



HOTELS

	PHONE	ROOMS	POOL	FREE BREAKFAST	PET FRIENDLY	WIRELESS HOT SPOT	INTERNET	FITNESS CENTER	RESTAURANT
Baymont Inn & Suites	785-380-8101	60	Outdoor	Continental		●	●	●	
SureStay Plus by Best Western	785-228-2223	45	Indoor	Continental	●	●	●	●	
Candlewood Suites - Extended Stay	785-271-7822	78			●		●	●	
Comfort Suites	785-246-6777	64	Indoor	Full	●	●	●	●	
Country Inn & Suites	785-478-9800	58	Indoor	Full	●		●	●	
Courtyard by Marriott	785-271-6165	90			●	●	●	●	●
Cyrus Hotel	785-596-0500	109			●	●	●	●	●
Days Inn	785-272-8538	59	Indoor	Grab & Go	● (no cats)		●		
Meadow Acres	785-267-1681	75		Continental	●		●		
Econo Lodge - Wanamaker	785-273-5365	58		Continental	●		●		
Endeavor Inn & Suites	785-273-8888	119	Outdoor	Continental	●		●	●	
Fairfield Inn by Marriott	785-273-6800	62	Indoor	Full			●		
Garner Hotel Topeka West	785-228-2500	65	Indoor	Full	●		●	●	
Hampton Inn	785-228-0111	89	Indoor	Full	●		●	●	
Hilton Garden Inn Topeka	785-350-2069	123	Indoor		●		●	●	●
Holiday Inn Express & Suites North	785-861-7200	81	Indoor	Full	● (\$25/night)		●	●	
Holiday Inn Express & Suites	785-228-9500	81	Indoor	Full			●	●	
Homewood Suites - Extended Stay	785-861-7840	87	Indoor	Hot Buffet	●	●	●	●	
Hotel Topeka at City Center	785-431-7200	224	Indoor		●		●	●	●
Hyatt Place	785-273-0066	126	Outdoor	Continental	● (no cats)	●	●	●	●
Motel 6 - Fairlawn	785-272-8283	60			●		●		
Quality Inn	785-273-6969	47	Indoor	Full	●		●		
Ramada Hotel & Convention Center	800-432-2424	213	Both	Full	●		●		
Relax Inn	785-273-9888	91			●		●	●	
Residence Inn by Marriott - Extended Stay	785-271-8903	66	Indoor	Full	●		●	●	
SpringHill Suites	785-596-9650	85	Indoor	Continental	(service animals only)		●	●	
Super 8 at Forbes Landing	785-862-2222	63	Indoor	Continental			●	●	
Super 8 Motel - Wanamaker	785-273-5100	40		Continental	●	●	●		
Travelers Inn	785-267-1222	30			●		●		
Woodspring Suites - Extended Stay	785-271-8862	105			● (dogs only)		●		
Ravenwood Lodge	785-256-6444	5					●		



SCAN ME

Topeka High Drum Line



Fight Night



For The Culture KS Festival



Fiesta Topeka Parade



MAKE YOUR NEXT MEMORIES IN **TOPEKA.**

Explore events and find the best places to stay at topekalodging.org.

Photography: Keith Horinek

TOPEKA
LODGING
ASSOCIATION



Topeka

Enjoy a nice, cozy stay in our newly renovated rooms!

6021 SW SIXTH AVE TOPEKA, KS 66615

785-273-0066

WWW.HYATT.COM



The Woodward Inns *on Fillmore*

Topeka's Luxury Corporate Lodging Destination

The Woodward Inn

Historic Elegance
Corporate Lodging
4+ BR / 4+ BA



The Woodward Max & Woodward Executive



Executive Corporate Lodging
Contemporary but Historic
The Woodward Max: 4 BR / 4 BA
Woodward Executive: 3 BR / 3 BA



Ready for New Ownership • Serious Inquiries Entertained

785-354-7111 • thewoodward.com • thewoodward.blogspot.com



IrishFest & St. Patrick's Day Parade



Tulip Time



NOTO Summer Concert Series



Downtown Topeka Farmers Market



Every Plaza Eats & Beats

No matter when you visit Topeka, you'll find something exciting to do on the



From big-time to neighborhood-niche, experience for yourself why we call it #TopCity!

Scan the code to check out all the events:




Fiesta Topeka Festival



For the Culture KS Fest



Mulvane Art Fair



Touch-a-Truck



Huff 'n Puff Hot Air Balloon Festival



Kansas Book Festival



India Mela



Thunder Over the Heartland



Boo at the Zoo



Miracle on Kansas Ave Parade



Zoo Lights



EVERGY PLAZA

Come for lunch, fun in the fountains, music at sunset and more! This vibrant city plaza features more than 200 events each year. Enjoy free concerts, movie nights, cultural festivals, food trucks, splash pads, fountain shows, and more at this premier outdoor entertainment venue. To learn more, visit EvergyPlaza.com.





**HARLEM
GLOBETROTTERS**

STORMONT VAIL EVENTS CENTER

Stormont Vail Events Center, Topeka's largest entertainment complex, provides top-notch events for the city and region! \$48 million in recent upgrades to Landon Arena and the event center's Exhibition Hall allow the venue to host various live shows, sports tournaments, fairs, concerts, and more. From country artists to the Harlem Globetrotters, fill up on high-energy fun at "The Vail"! And don't sleep on the event center's Domer Livestock Arena, one of the best equestrian event centers in the Midwest. Learn more at StormontVailEventsCenter.com



TULIP TIME

Spring into the season with Tulip Time! Each April, you'll find Topeka in full bloom, as the city comes alive with hundreds of thousands of tulips. From cheerful yellow and passionate red to pure pink and wild two-toned beauties, the capital city's parks and gardens are where you'll want to take it all in this spring. Stop by Gage Park, Ted Ensley Gardens at Lake Shawnee, and Ward-Meade Park's Botanical Gardens for some of our favorite displays!

GLOWING FLOWER SHOWS

During Tulip Time, the Botanical Gardens at Ward-Meade Park hosts its annual Tulips at Twilight event—and in the late summer/early fall, don't miss Garden Glow! Both Tulips at Twilight and Garden Glow feature larger-than-life illuminated flowers and a variety of lighted displays perfect for nighttime viewing.



BREWSTER PLACE

Topeka's Award-Winning Life Plan Retirement Community

Lifestyle Choices:

Independent Living
Catered Living
Assisted Living
Memory Care
Brewster Health Center
Rehabilitation Center

Call for more information
and to schedule your tour!
785-274-3351



Featured Amenities:

24/7 security
4 dining venues
Indoor saltwater pool
Life-Long learning
Dynamic programming
Maintenance-free campus



brewsterliving.org
1205 SW 29th St || Topeka, KS



Celebrating 60 years of commitment!

ABOVE AND BEYOND BANKING

Since 1939, Azura Credit Union is proud to serve Kansans as a member-owned, not-for-profit financial cooperative. Our commitment to our community and members is reflected in our innovative products and services, educational outreach, active volunteerism and charitable giving.

TOPEKA • LENEXA • MISSION • OLATHE • OTTAWA



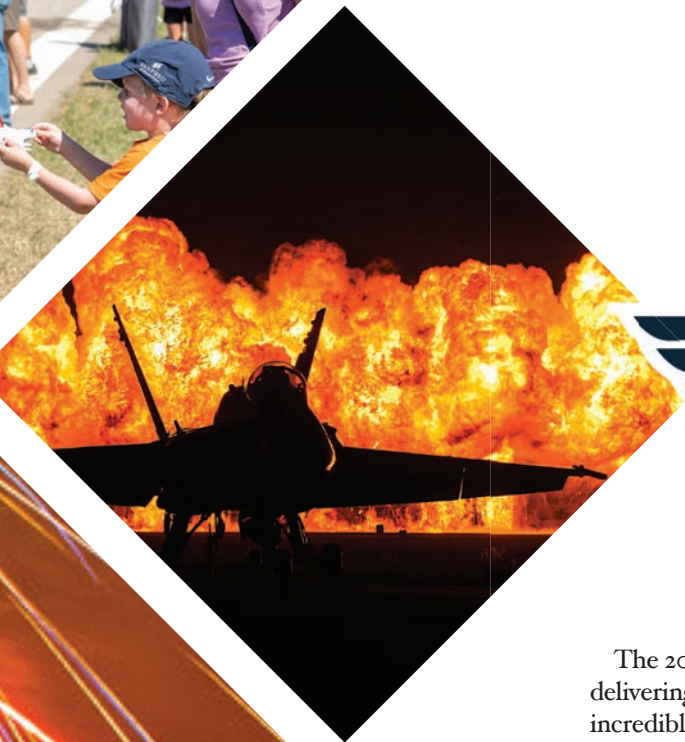
800-432-2470
AZURACU.COM



FEDERALLY INSURED BY NCUA







The 2024 Thunder Over the Heartland Air Show soared into Topeka, delivering an unforgettable experience for thousands of visitors and locals! This incredible event showcased some of the nation's top aerial performers, including the U.S. Air Force Thunderbirds, along with thrilling pyrotechnic night shows on Saturday and Sunday evenings. The skies lit up with afterburning military jets, breathtaking aerobatic displays, and a spectacular fireworks finale. Thunder Over the Heartland 2024 was truly a one-of-a-kind airshow, blending high-flying action with jaw-dropping excitement. And the best part? All the heart-pounding thrills will return in 2026! Keep an eye out for more details at thunderovertheheartland.com.



TOPEKA SPORTS

With so many sports represented, Topeka is a great place to catch a game, match or meet. Recent construction and venue upgrades have made the city a contender for notable sporting events, from youth to the collegiate level. One such example is Washburn University's new indoor track-and-field facility. Quickly becoming a premier destination, this 200-meter banked track hosted the 2023 NJCAA Men's and Women's Indoor Track and Field National Championships, and the facility's unique dual-layout design offers athletes a premium experience on both track and turf. With space for 1,000 spectators, there isn't a bad seat in the house!

Stormont Vail Events Center, meanwhile, recently underwent a \$48 million renovation that brought renewed interest in the facility. In late 2024, the National Association of Intercollegiate Athletics announced the events center as its host site for the NAIA's 2026 and 2027 Cheer and Dance National Championships. It's the cherry on top of annual events there like Kansas Kids Wrestling Championships, the Harlem Globetrotters, Blizzard Bash Demolition Derby, and many more.

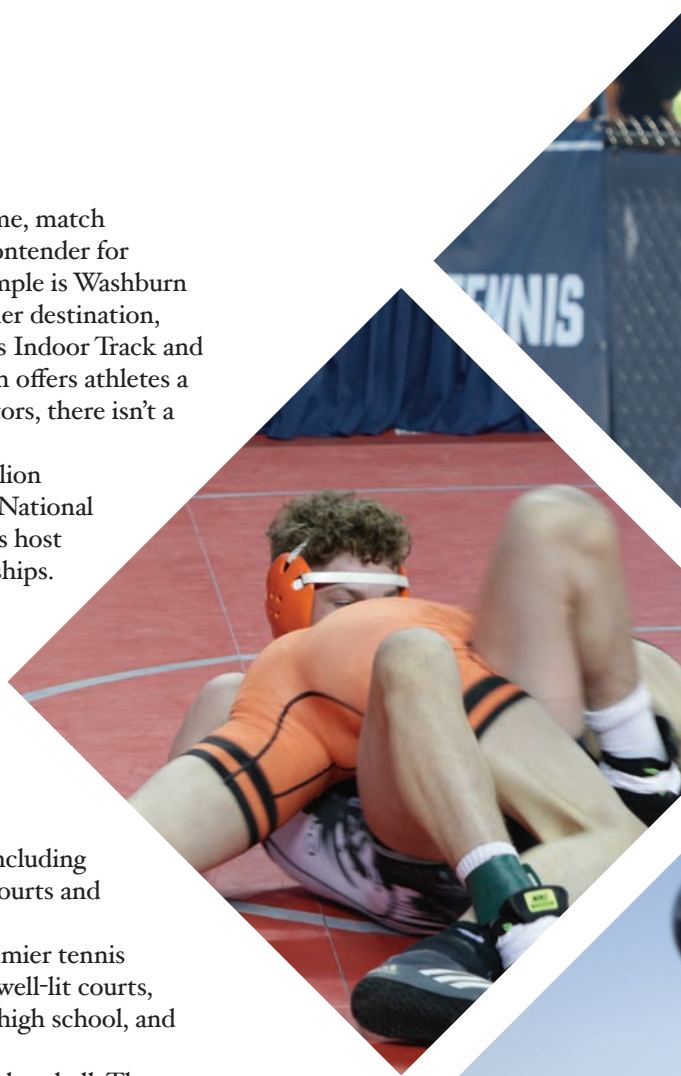
A July tradition for nearly 20 years, the Sunflower State Games is a multi-sport competition that takes place annually over three weekends at venues across Topeka. This qualifier for the National State Games provides Kansans from various age groups and backgrounds the chance to compete and showcase their talents at the state level. Everything from swimming to cornhole can be found at hosting locations across the city, including Hummer Sports Park, Stormont Vail Events Center, and Topeka's many courts and ballparks.

Speaking of courts, Kossover Tennis Center is one of the Midwest's premier tennis facilities and home to the Topeka Tennis Association. This facility has 18 well-lit courts, along with a clubhouse, and hosts many tournaments at the adult league, high school, and collegiate levels.

The "Top City" sports scene wouldn't be complete without softball and baseball. The Bettis Sports Complex and Lake Shawnee Girls Softball Complex offer players spectacular views of Lake Shawnee. Recently installed turf fields at the softball complex result in nine new turf fields at the lake. Nearby amenities are also plentiful, allowing for games throughout the year.



The Topeka Area Sports Commission (TASC) advocates for strategic advancement of the sports scene in the greater Topeka area. TASC's mission is to position Topeka as a top destination for athletic competition at the highest levels. It does so by helping build an inclusive, quality sports environment that promotes health and wellness for all. To learn more, visit TopekaSports.org.







KANSAS ENTERTAINMENT CENTER - LANDON ARENA

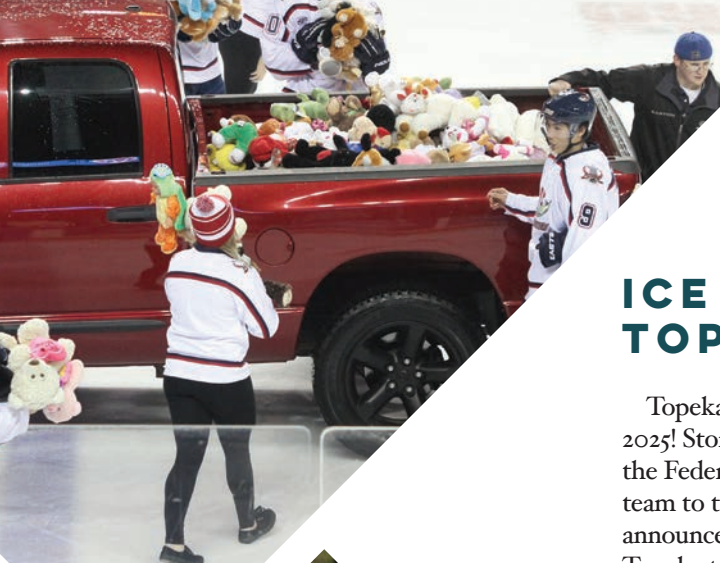
PERIOD	1	2	3	TOTAL
GOALS	1	2	1	4
SHOTS	15	12	10	37
SAVES	10	8	7	25
FACE-OFFS	12	11	10	33
TIME-OUTS	0	0	0	0

FINALITY 10:15

Aut Accept Ce
783

BRENNAN
4

NAHL



ICE HOCKEY RETURNS TO TOPEKA IN 2025

Topeka's beloved ice hockey tradition is making an exciting comeback in fall 2025! Stormont Vail Events Center has entered a three-year agreement with the Federal Prospects Hockey League (FPHL), bringing a new professional team to the city for the 2025-2026 season beginning in October. This exciting announcement marks the return of hockey to Landon Arena, home to former Topeka teams like the Scarecrows, Tarantulas, Roadrunners, and Pilots. While Topeka has historically hosted recruiting-league teams, the new FPHL squad brings professional athletes to the city, meaning more fast-paced energy and skill on the ice. Fans can expect 28 home games at Stormont Vail Events Center, where the competition will be fierce.

In addition to thrilling games, Stormont Vail Events Center will host public skate sessions and post-game opportunities, so fans can hit the ice themselves. Whether you're a seasoned skater or first-timer, these sessions will add an extra layer of excitement to the season. The 2025-2026 season promises high-energy action and family-friendly fun for fans of all ages. Mark your calendars and join us to celebrate the return of Topeka hockey! Learn more at StormontVailEventsCenter.com.



FESTIVAL FUN

ARTS, CULTURE & MUSIC

FIESTA TOPEKA

For more than 90 years, Fiesta Topeka has celebrated Mexican culture and its history in Topeka. Organized by the city's Our Lady of Guadalupe parish and community volunteers, Fiesta Topeka is one of the oldest community Hispanic celebrations in the U.S. and the most prominent celebration of its kind in the region. Fiesta Topeka is held each summer, usually in July, and includes a downtown concert and parade, as well as exciting multi-block celebrations in Topeka's historic Oakland neighborhood. At this multi-day event, you can enjoy live music and dance performances, as well as some of the best Mexican food in the Midwest! For more, visit FiestaTopeka.com.

DID YOU KNOW?

Visit Topeka produces a Spanish version of this city guide? Check out VisitaTopeka.com to learn more!





CE
REJOICE
FOR THE CULTURE KS

FOR THE CULTURE KS

Each year, typically in late July, For the Culture KS holds its multi-day festival in and around downtown Topeka's Every Plaza to celebrate the region's Black heritage, culture and excellence. Set to return in summer 2025, this event features an opening gala; various performances by artists in gospel, hip hop, soul, and other genres; comedy acts; panel discussions; wellness sessions; diverse vendors; food trucks; and much more. All are welcome at this annual event! For more info and the latest updates, follow For the Culture KS on social media or visit ForTheCultureKS.org.



INDIA MELA

Celebrate the food, music, and culture of India with India Mela Topeka! Organized by the India Association of Topeka, the group held a lively one-day festival in 2023, put on a Bollywood Movie Night in 2024, and has more in the works for 2025. Keep an eye on India Mela Topeka's Facebook page for updates on festivities to come!



HOLIDAY & SEASONAL EVENTS

SPRING:

GOVERNOR'S EASTER EGG HUNT

Hosted by the Kansas governor and first spouse at Cedar Crest, the governor's mansion, this annual event usually takes place the Saturday before Palm Sunday. Children under the age of 10 are invited to take part, and participation is free!

TULIP TIME

Don't miss Topeka's colorful Jerold Binkley Tulip Time held each April! Spanning locations across Topeka—including Ted Ensley Gardens at Lake Shawnee, Doran Rock Garden at Gage Park, and the Old Prairie Town/Ward-Meade Botanical Garden—the city's green spaces bloom with beauty each spring. With the sought-after, lighted displays of Tulips at Twilight, Ward-Meade even glows at night! Don't miss the annual Tulip Time Festival at Lake Shawnee to round out your seasonal fun.

NOTO'S REDBUD FESTIVAL

Redbud Festival, in and around the NOTO Arts and Entertainment District's Redbud Park, is being rebranded for 2025 as Redbud Youth Festival! Planned for April 1 through May 3, 2025, Redbud Youth Festival is a vibrant celebration that showcases the talents of young artists. Learn more at ExploreNOTO.org.

THE ARTS & MORE

Topeka is no stranger to festivals celebrating art, music, literary prowess, and more! Visit during the summer or fall to attend fun events like those listed here:

- Aaron Douglas Art Fair, held in late September or early October each year (learn more at AaronDouglasArtFair.com)
- ForgeFest, put on each September by Forge Young Talent (learn more by visiting TopekaForge.org)
- Kansas Book Festival, slated for Sept. 20, 2025 (learn more at KansasBookFestival.com)
- Mulvane Art Fair, scheduled for June 7-8, 2025 (learn more at MulvaneArtMuseum.org/artfair)
- Pride Palooza, typically held during Pride Month in June (look for Topeka Pride on social media to learn more)
- Sunflower Music Festival, being held June 20-28, 2025 (learn more at SunflowerMusicFestival.org)
- Sunshine Reggae Roots Fest, held each summer at The Celtic Fox (find The Sunshine Reggae Roots Festival on Facebook for more)
- Tap That Topeka Beer Fest, held downtown each summer (learn more at TapThatTopeka.com)
- Topeka's Backyard Music Fest, typically held over the summer (learn more at TopekasBackyardMusicFest.com)
- Topeka Food Truck Festival, planned for Aug. 24, 2025 (follow Topeka Food Truck Festival on Facebook for more)



LUCK OF THE IRISH

For more than 40 years, the Topeka St. Patrick's Day Parade has wound through downtown! The parade is held in conjunction with Topeka IrishFest, both of which are organized by Irish Club of Topeka. The 2025 parade is scheduled for Saturday, March 15. IrishFest is slated for the same day at Everygy Plaza and typically includes a 5K fun run, beer garden, games, live bands, and Irish dancing.



Spirit of Kansas Blues Festival



JUNETEENTH

Each June, Topekans come together to celebrate freedom and the history of the city's Black community through the Topeka Juneteenth Festival, put on by the Topeka Family & Friends Juneteenth Celebration committee. Activities span multiple days and include the Miss Juneteenth Scholarship Pageant, a unity walk and flag raising, the annual downtown parade, and more! For the latest on 2025 festivities, visit TFFJC.org.

SUMMER:

GERMANFEST

Slated for June 7-8, 2025, Germanfest is put on annually by Topeka's Sacred Heart - St. Joseph Parish. This two-day festival celebrates the parish's history as home to German and Volga German immigrants. Germanfest features authentic German foods, a beer garden, vendors, live entertainment, games, a silent auction, "brat trot" fun run, and more!

INDEPENDENCE DAY

Each year on the 4th of July, the Topeka Blues Society puts on the Spirit of Kansas Blues Festival at Lake Shawnee. The tradition features a day full of live music, food trucks, craft vendors, a classic car show, and more. After the music has waned, stick around for a fantastic fireworks show over the lake! For the latest lineup and more information, visit TopekaBluesSociety.org.



**VIEW OUR
TOPEKA365
EVENTS
CALENDAR!**



FALL:

TOUCH-A-TRUCK

This family friendly event typically takes place the Saturday after Labor Day and is slated for Sept. 6, 2025. Touch-A-Truck is a local favorite among families with kids. Held downtown around Evergy Plaza, the event allows children of all ages to get up close and personal with fire trucks, skid steers, tractors, cranes, and many more types of trucks and equipment!

CIDER DAYS

Don't miss Cider Days, the largest fall festival in Northeast Kansas! Scheduled for Sept. 20-21, 2025 at Stormont Vail Events Center's Exhibition Hall, visit to explore more than 250 festive fall booths by creators, makers, artisans, and pickers. Whether you're in the mood for scrumptious food, attractive art, colorful crafts, live entertainment, a pie bake-off, or coveted apple cider slush, you'll find all your fall favorites at the annual Cider Days!

HALLOWEEN

Each Halloween, you can count on the Topeka Zoo & Conservation Center to host the friendliest ghosts and ghouls! Boo at the Zoo offers fun and safe zoo-wide trick-or-treating for kids of all ages. Looking for more Halloween fun? Then, check out the annual indoor haunted house at Stormont Vail Events Center or the outdoor Topeka Haunted Woods, a local haunted walkthrough trail. Looking for an adults-only party to write home about? Then, snag your tickets for Townsite Topeka's annual Halloween extravaganza!

VETERANS DAY

Topeka's Sunflower Salute Veterans Day Parade is organized each year to respectfully honor and pay tribute to veterans of all ages. The event often includes a flyover, and many community organizations create floats for the occasion. For more, find "Topeka Veterans Parade" on Facebook by searching @SunflowerSalute.

WINTER:

KREADY HOLIDAY SPECTACULAR

Celebrate the holiday season at this concert for the whole family! With 19 Broadway shows between them, Jeff Kready and Nikki Renée Daniels bring the sounds of New York City to the Topeka Performing Arts Center, accompanied by the Topeka Symphony Orchestra and the Shawnee Choral Society.

SLI FESTIVAL OF TREES

Experience a dazzling display of festive, decorated trees and wreaths at SLI Festival of Trees—all to support a great cause! SLI is a not-for-profit serving individuals living with intellectual and developmental disabilities. Learn more about the event and SLI's mission at SLITopeka.org/festival.

WINTER WONDERLAND

This season, grab your loved ones and hop in the car to head toward Topeka's Winter Wonderland! View dazzling holiday light displays while winding through a two-mile scenic drive at Lake Shawnee. Donations from this annual tradition go to support TARC, a local nonprofit serving children and adults with intellectual and developmental disabilities.

NEW YEAR'S EVE


Celebrate the new year at multiple locations across the capital city! From the NOTO Arts & Entertainment District's Redbud Park ball drop to festive downtown events like those at The Beacon and Townsite Avenue Ballroom, Topeka's New Year's Eve parties are sure to help you ring in the year right.



Winter Wonderland



New Year's Eve



Kready Holiday Spectacular



WINTER:

CHRISTMAS PARADE

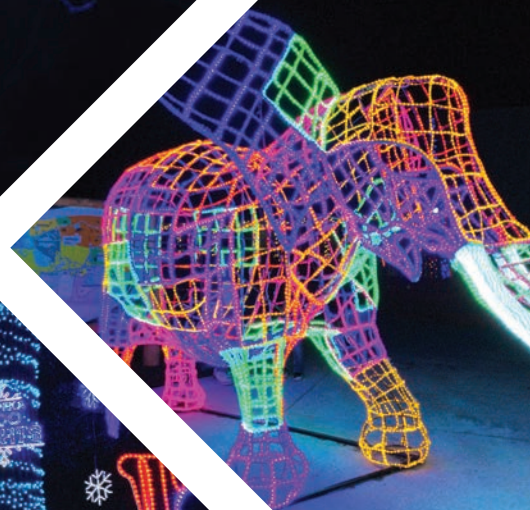
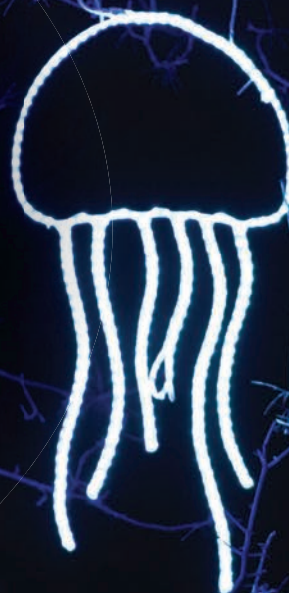
Typically held the first weekend in December, Topeka's coveted downtown Christmas parade, Miracle on Kansas Avenue, is a holiday favorite! Enjoy tons of holiday-themed floats, marching-band performances, a chance to see Santa and his reindeer, and so much more. Also, don't miss the annual Christmas tree lighting at Every Plaza!





TOPEKA ZOO LIGHTS

Topeka Zoo Lights, presented by Evergy, has quickly become an exciting tradition for people across northeast Kansas! Each year, the Topeka Zoo & Conservation Center creates a dazzling, zoo-wide light show featuring thousands of bright bulbs and holiday displays. The event grows larger year over year and typically runs from mid-November through the end of December. Santa and Mrs. Claus have been known to make an appearance, alongside their favorite reindeer—and don't forget to enjoy some festive photo ops along the way! For a more intimate evening under the lights, guests can rent cozy, private Igloo experiences, with packages featuring festive drink and snack options and more! To learn more and purchase tickets, visit TopekaZoo.org/Zoolights.





CHILL OUT

Rent an igloo at Topeka Zoo Lights for a special night out. Complete with heat, treats and more, visit TopekaZoo.org to reserve Winter for 2025.



Join the Stormont Vail Health Team!

Best Place to Train, Work, and Grow!

Excel in healthcare—whether in scrubs or slacks!
We offer clinical and non-clinical roles in HR, the ER, the OR, and more.

Work with the best!

Thrive in a supportive environment with access to top expertise through our Mayo Clinic Care Network and Children's Mercy partnerships.

Build your career!

Enjoy advancement opportunities and benefits that match your expertise and skills.



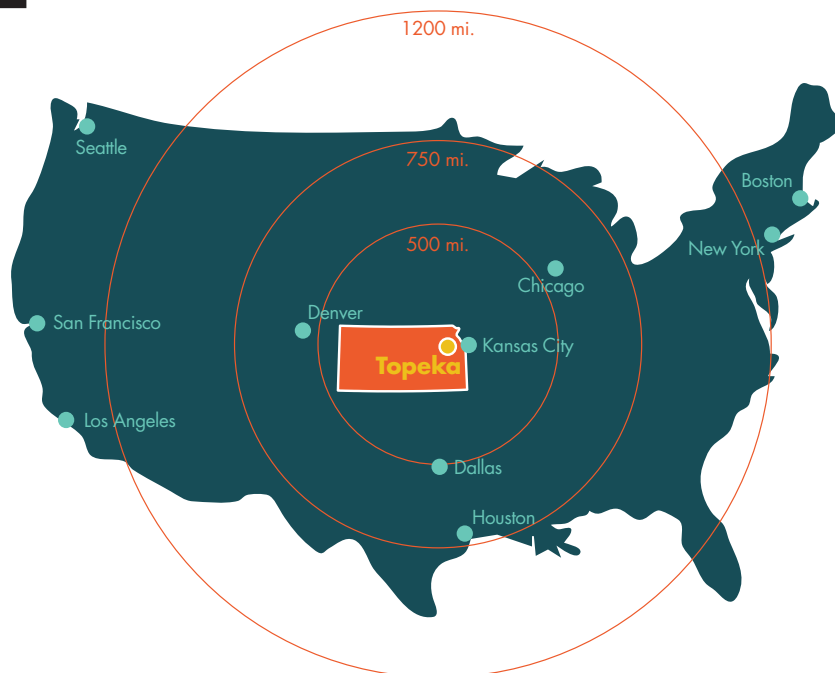
Opportunity is closer than you think.

Explore yours at stormontvail.org/careers or scan the code:



COMMUNITY PROFILE

TOPEKA & SHAWNEE COUNTY, KANSAS



POPULATION

MSA* (5 counties)	232,322
City of Topeka	125,475
Shawnee County	177,746
State of Kansas	2,940,546

Source: 2023 U.S. Census Bureau, Population Estimates Program (PEP)

*Metropolitan Statistical Area: Shawnee, Jackson, Jefferson, Wabaunsee and Osage Counties

SHAWNEE COUNTY ETHNIC POPULATION DISTRIBUTION

White	77.8%
Black/African-American	8%
American Indian/Alaskan Native	0.6%
Asian	1.5%
Native Hawaiian or other Pacific Islander	0.1%
Two or more races	7.7%

Source: 2022 ACS 5-Year Estimates

Note: People of Hispanic or Latino origins represent 13.2% of the population which is included in each of the above racial distributions. Hispanics may be of any race.

TOPEKA/SHAWNEE COUNTY MSA POPULATION BY AGE GROUP

Age	Shawnee	Jackson	Jefferson	Osage	Wabaunsee	Totals
0 to 9 years	21,113	1,807	1,993	1,829	900	27,642
10 to 19 years	23,865	1,851	2,286	2,165	931	31,098
20 to 44 years	54,654	3,643	5,044	4,295	1,883	69,519
45 to 64 years	42,597	3,359	5,100	4,138	1,783	56,977
65+ years	33,317	2,708	3,904	3,397	1,560	44,886
Totals	177,746	13,368	18,327	15,824	7,057	232,322
Median Age	39.4	40.7	43.2	42	43.8	41.82

*The demographic data in this report is compiled from several sources using a specialized process.

Sources include annual population estimates and population projections from the US Census Bureau, and birth and mortality rates from the US Health Department.

LOCATION DATA

ELEVATION

The elevation ranges from 876 feet above sea level in the valley to 971 feet in the southwest part of the city.

AVERAGE DAILY TEMPERATURES

Month	High	Low
January	47°	22°
February	47°	18°
March	62°	34°
April	72°	42°
May	80°	54°
June	91°	65°
July	93°	68°
August	93°	67°
September	89°	58°
October	76°	46°
November	61°	31°
December	53°	28°

Source: US News & World Report Real Estate - National Climate Data Center

LAND AREA

City of Topeka	58 sq. miles
Shawnee County	552 sq. miles

PRECIPITATION

2023 Rainfall	32.23"
2023 Snowfall	23.2"

Source: w2.weather.gov/climate Climatological Report (Annual)

DISTANCE

Kansas City	60 miles
Omaha	170 miles
St. Louis	315 miles
Dallas	505 miles
Chicago	550 miles
Denver	560 miles
Houston	740 miles

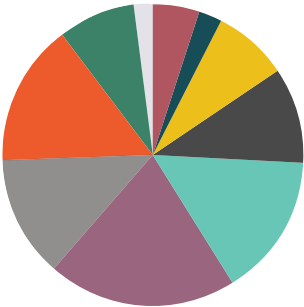
INCOME

COST OF LIVING

The Greater Topeka Partnership participates in the ACCRA Cost of Living Study three times a year. The study measures differences between areas in the cost of consumer goods and services, excluding taxes and non-consumer expenditures for professional and managerial households in the top income quintile. Generally about 300 communities participate with the average ranking being 100. Topeka consistently ranks 6 - 8 points below average.

Topeka, KS Metro	80
Kansas City, MO-KS Metro	88.4
Wichita, KS Metro	82.8
Lawrence, KS Metro	93
Denver, CO	127.6
Dallas, TX	100.2

SHAWNEE COUNTY HOUSEHOLD INCOME



6.8%	Less than \$10,000
2.6%	\$10,000-\$14,999
7%	\$15,000-\$24,999
8.8%	\$25,000-\$34,999
13.6%	\$35,000-\$49,999
19%	\$50,000-\$74,999
11.9%	\$75,000-\$99,999
17.4%	\$100,000-\$149,999
6.7%	\$150,000-\$199,999
6.1%	\$200,000 or more

Source: Bestplaces.net

INCOME

	Shawnee County	Topeka
Median Household Income	\$62,512	\$54,052
Mean Household Income	\$83,364	\$72,948

Source: data.census.gov/table/ACSST1Y2023.S1901?g=050XX00US20177

TAXES

RESIDENTIAL PROPERTY TAX

Residential property tax is determined by taking 11.5 percent of the appraised value to determine the assessed value; vacant lots are 12 percent of the appraised value. The yearly determined mill levy is applied to determine the property tax. (Mill levies are computed annually and may vary because of location of property and/or additional special assessments.)

TRANSIENT GUEST TAX

There is a 7% tax added to hotel/motel room bills for stays up to 28 days.

MILL LEVY

Within Shawnee County property taxes are evaluated by mill levies. The current mill levy in Topeka begins at 148.924.

Source: data.census.gov/table/ACSST1Y2023.S1901?g=050XX00US20177

INCOME TAX RATES

Tax Year	Income Under \$30,000	Income Above \$30,000	Income Above \$60,000
2021	3.1%	\$930 plus 5.25%	\$2,505 plus 5.7%
2022	3.1%	\$930 plus 5.25%	\$2,505 plus 5.7%
2023	3.1%	\$930 plus 5.25%	\$2,505 plus 5.7%

SALES TAX RATES

State	6.50% effective 2025 this excludes food
-------	---

Country	1.35%
Topeka	1.50%

Total 9.35%

Source: www.ksrevenue.gov/salesratechanges.html

EMPLOYMENT



TOPEKA LABOR FORCE DRAWING POWER (OCT 2023)

County	Civillian Labor Force
Shawnee	92,496
Jackson	7,313
Jefferson	10,408
Osage	8,030
Wabaunsee	3,754
Pottawatomie	13,555
Douglas	71,366
Totals	206,922

Source: BLS LAUS

TOPEKA & SHAWNEE COUNTY LARGEST EMPLOYERS

Topeka is home to national and international companies including Advisors Excel, Security Benefit, SE2, Evergy, BNSF.

Government

- City of Topeka
- Coast Guard
- Department of Veteran Affairs
- State of Kansas

Insurance/Financial

- Advisors Excel
- Capitol Federal
- CoreFirst
- FHLBank Topeka
- Gradient

Financial

- Security Benefit
- SE2

Manufacturing & Distribution

- Frito Lay
- Goodyear Tire & Rubber
- Hill's Pet Nutrition
- HME
- Home Depot DC

- MARS Chocolate NA
- Polo Custom Products
- PTMW
- Reser's Fine Foods
- JM Smucker Pet Foods
- Southwest Publishing
- Target DC
- US Foods
- Wal-Mart Associates

- Cox Communications
- Evergy

Education

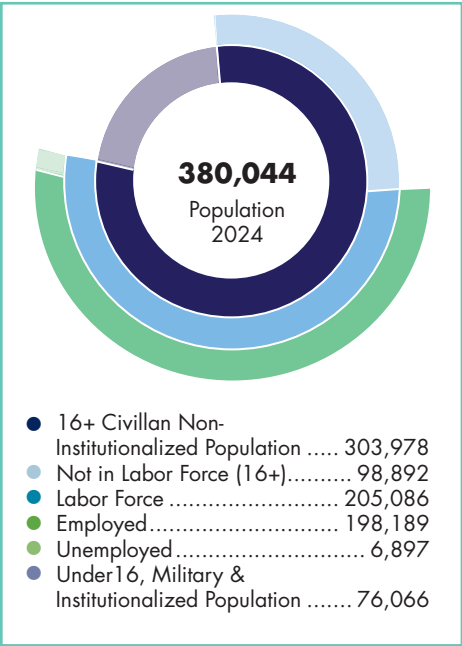
- Topeka Public Schools
- Washburn University

Medical/Health Services

- Blue Cross & Blue Shield
- Stormont Vail Health
- University of Kansas Health Systems
- St. Francis Campus

Transportation, Utility & Commn.

- AT&T
- BNSF Railway



TOPEKA MSA EMPLOYMENT (5 COUNTIES)

Health Care & Social Assistance	21,538
Public Administration	12,804
Retail Trade	10,265
Educational Services	9,499
Accommodation & Food Services	8,639
Administrative & Support	7,294
Manufacturing	8,864
Finance & Insurance	6,099
Construction	6,722
Other Services	5,297

Source: JobsEQ 2023Q2

Unemployment in October 2023 was 3.1%. Kansas is a right-to-work state by constitutional amendment.

HOUSING

2024 COMPARABLE HOME PRICE INFORMATION

	Avg. Price	1-yr +/-
Topeka	186,706	6.30%
Kansas City, MO	235,610	3.10%
Little Rock, AR	211,683	3.90%
Wichita, KS	196,225	6.20%
Oklahoma City, OK	199,271	1.70%
Des Moines, IA	202,996	4.60%
Springfield, MO	229,516	3.10%
Indianapolis, IN	225,605	2.30%
Houston, TX	263,315	0.50%
Dallas, TX	308,434	-0.30%
Denver, CO	545,247	-1.40%

Source: Zillow Home Value Index

APARTMENT RENTAL RANGES

1 Bedroom	\$748
2 Bedroom	\$965
3 Bedroom	\$1,250
4 Bedroom	\$1,421

Source: 2024 HUD Small Area Fair Market Rents

Rental ranges are for rental units built within the last 10 years. Each complex offers selected amenities such as fireplaces, garages, microwaves, saunas, pools, washer-dryer hook-ups, basements, exercise rooms, etc. Rates are subject to change.

HEALTHCARE

GENERAL MEDICAL HOSPITALS

NOTE: These hospitals maintain emergency departments and have emergency room physicians on site.

UNIVERSITY OF KANSAS HEALTH SYSTEM ST. FRANCIS CAMPUS

1700 SW Seventh St.
Topeka, Kan. 66606
785.295.8000; kutopeka.com
University of Kansas Health System St. Francis Campus, formerly known as St. Francis Health Center is a for-profit hospital in Topeka, Kansas, United States.

STORMONT VAIL HEALTH

1500 SW 10th Ave.
Topeka, Kan. 66604
785.354.6000; stormontvail.org
Stormont Vail Health is a regional medical center that includes primary care and specialty physicians in the Cotton-O'Neil Division. Stormont Vail Health was the first Kansas hospital to join the Mayo Clinic Network.

TOPEKA ER & HOSPITAL

6135 SW 17th St.
Topeka, Kan. 66615
785.670.6760; topekahospital.com
Topeka ER & Hospital is an emergency-focused micro-hospital that uses the same cutting-edge equipment and technology found in a modern ER.

SPECIALIZED HOSPITALS

COLMERY-O'NEIL VA MEDICAL CENTER

2200 SW Gage Blvd.
Topeka, Kan. 66622
785.350.3111
www.topeka.va.gov



KANSAS NEUROLOGICAL INSTITUTE

3107 SW 21st St.
Topeka, Kan. 66604
785.296.5389
www.kdads.ks.gov/state-hospitals/kansas-neurological-institute-kni

KANSAS REHABILITATION HOSPITAL

1504 SW Eighth Ave.
Topeka, Kan. 66606
785.235.6600
encompasshealth.com

TALLGRASS AMBULATORY SURGERY CENTER

6001 SW Sixth Ave., Suite 100
Topeka, Kan. 66615
785.272.8807
kutopeka.com

MENTAL HEALTH SERVICES

FAMILY SERVICE & GUIDANCE CENTER OF TOPEKA

325 SW Frazier
Topeka, Kan. 66606
785.232.5005

fsgctopeka.com VALEO BEHAVIORAL HEALTH CARE

330 SW Oakley
Topeka, Kan. 66606
785.233.1730
24-Hour Crisis Hotline 785.234.3300
Valeo Recovery Center 785.234.3448
valeotopeka.org

THERAPY SERVICES

CAPPER FOUNDATION

3500 SW 10th Ave.
Topeka, Kan. 66604
785.272.4060
capper.org

ADULT CARE HOMES

The Topeka area is home to many adult care homes that provide a range of services including nursing, assisted living, residential health care and nursing facilities for the mentally ill. Please check a local phone directory for a complete listing. For other information, call the Kansas Department for Aging and Disability Services, 785.296.4986.

EDUCATION

ACT SCORES IN SHAWNEE COUNTY

District	Enrollment (2022-23)	Average ACT Scores
Kaw Valley (USD 321)	1,068	18
Seaman (USD 345)	3,831	20
Silver Lake (USD 372)	674	21
Auburn Washburn (USD 437)	6,049	23
Shawnee Heights (USD 450)	3,722	22
Topeka Public (USD 501)	12,855	18

Source: KSDE Data Central

PUBLIC SCHOOLS

AUBURN WASHBURN (USD 437)

785.339.4000
usd437.net



KAW VALLEY (USD 321)

785.437.2254
kawvalley.k12.ks.us

SEAMAN (USD 345)

785.575.8600
seamanschools.org

SHAWNEE HEIGHTS (USD 450)

785.379.5800
usd450.net

TOPEKA (USD 501)

785.295.3000
topekapublicschools.net

SILVER LAKE (USD 372)

785.582.4026
silverlakeschools.org



Ranked #9
in Kansas

CATHOLIC EDUCATION

HAYDEN HIGH SCHOOL

785.272.5210
haydencatholic.org

PRIVATE SCHOOLS

CAIR PARAVEL LATIN SCHOOL

785.232.3878
cpls.org

HERITAGE CHRISTIAN SCHOOL

785.286.0427
hcestopeka.org

TOPEKA ADVENTIST CHRISTIAN SCHOOL

785.272.9474
topekaks.adventist
schoolconnect.org



TOPEKA COLLEGIATE

785.228.0490
topekacollegiate.org

HOME SCHOOLING

CORNERSTONE FAMILY SCHOOLS

785.430.8333
cornerstonefamilieschools.org

HIGH SCHOOL DIPLOMA PROGRAMS

ORION EDUCATION & TRAINING

785.228.2336
orioneducation.org

VOCATIONAL SCHOOLS

MIDWEST BARBER COLLEGE

785.266.2500
midwestbarbercollege.com

TOPEKA ELECTRICAL JOINT APPRENTICESHIP & TRAINING COMMITTEE

785.232.5154
topekaelectricaljatc.com

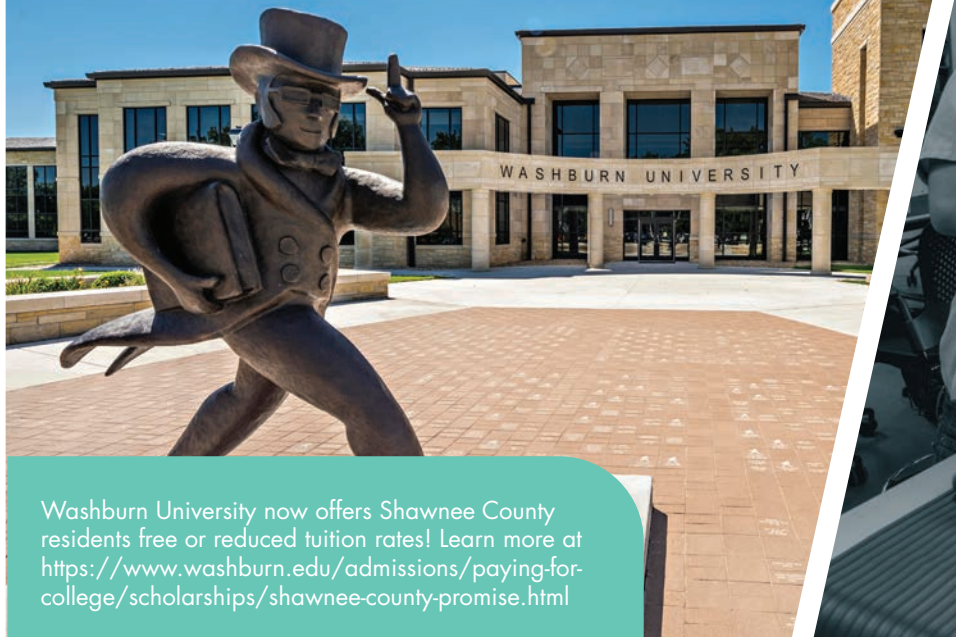
PLUMBERS & PIPEFITTERS APPRENTICESHIP SCHOOL (LOCAL 441)

785.354.8539
ua441.org

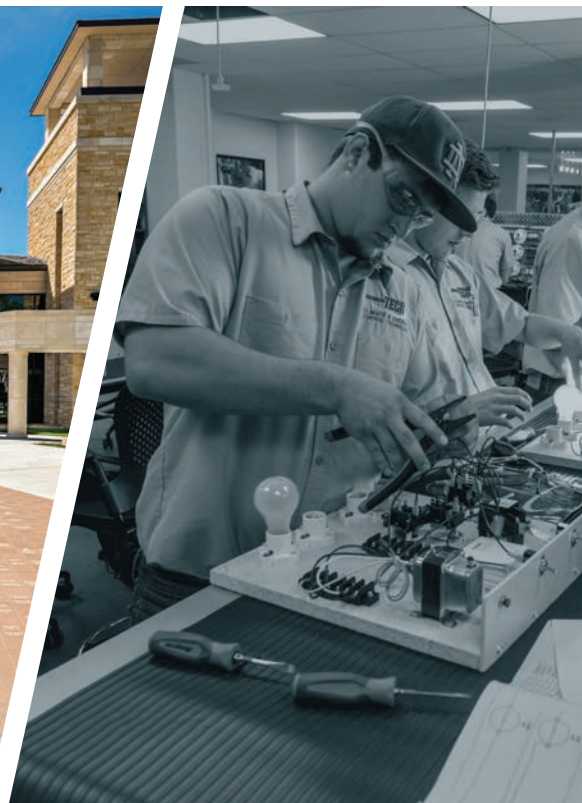
RASMUSSEN UNIVERSITY

785.228.7320
rasmussen.edu

WASHBURN



Washburn University now offers Shawnee County residents free or reduced tuition rates! Learn more at <https://www.washburn.edu/admissions/paying-for-college/scholarships/shawnee-county-promise.html>



WASHBURN UNIVERSITY

With an enrollment of over 7,500 students across Washburn University and Washburn Tech, Washburn University offers more than 200 programs leading to certification, associate, bachelor, master, doctor of nursing practice and juris doctor degrees through the College of Arts and Sciences and the Schools of Applied Studies, Business, Law and Nursing. The university is annually ranked as one of the best colleges in the Midwest by U.S. News & World Report.

Washburn University claims an experienced faculty, with over 80 percent of its full-time faculty holding doctorates or the terminal degree offered within their field of study. As graduate teaching assistants do not teach courses, undergraduate students work directly with professors in any and all related classwork.

WASHBURN TECH & WASHBURN TECH EAST

Washburn University Institute of Technology is a nationally recognized innovator in career and technical education. Their unique affiliation with Washburn University provides the opportunity to start with technical courses and continue to advanced degrees while preparing for today's careers.

Dedicated faculty and staff serve adult and high school students as well as business and industry participants with career specific training in the following:

- Advanced Manufacturing
- Business
- Computer & Networking Technology
- Construction
- Drafting & Design
- Health Care
- Hospitality & Human Services
- Transportation



Washburn Tech Main Campus

5724 SW Huntoon
Topeka, Kan. 66604
785.670.2200
washburntech.edu

Washburn University

1700 SW College, Topeka,
Kan. 66621
785.670.1010
washburn.edu

Washburn Tech East Campus

2014 SE Washington
Topeka, Kan. 66607
785.670.3380
www.washburntech.edu/about-us/washburn-tech-east.html

UNIVERSITY ENROLLMENT

Universities within an Hour of Topeka (Academic Year 2022)

Washburn University	5,663
University of Kansas	25,469
Kansas State University	19,269
Emporia State University	4,658
Allen Community College	1,817
Highland Community College	2,182
Haskell Indian Nations (2020)	731*
Baker University	1,187
Rasmussen College	690*

Source: Kansas Board of Regents 2023
*Last Available Data

NEIGHBORHOOD SPOTLIGHT

COLLINS PARK

The Collins Park neighborhood has winding roads, big trees and many picturesque English Tudor, Colonial and Cape Cod style homes. Stroll through this area in warm weather and you'll notice residents on their porch swings or dining outdoors.

COLLEGE HILL

Located just north of Washburn University's beautiful campus, College Hill is a historic neighborhood with a mixture of American Four-square, Victorian, Georgian Revival and Craftsman homes. College Hill is home to some of Topeka's favorite local restaurants and businesses near Washburn University.

DOWNTOWN LOFTS

In the midst of a budding retail and cultural reawakening, the Downtown Topeka Loft community has steadily started to grow. The Kansas Avenue loft crowd utilizes the many walkable amenities near to their homes that includes fun for the whole family. The kiddos can enjoy the numerous pocket parks that line the avenue while older members of the family drop by the local specialty shops.

POTWIN PLACE

One of Topeka's oldest neighborhoods, Potwin Place is well-known for its classic and colorful Victorian style homes. Potwin is a community favorite, especially at Christmastime, when neighbors join forces to decorate the homes and intersections with lights and themed decor.

LAUREN'S BAY

Lauren's Bay is a new master planned neighborhood offering a community with a view! Lauren's Bay has many amenities, including a neighborhood park, beautiful waterfall entry, 3 Lakes, and scenic walking trails. Lots are available for new construction. Go to the intersection of 47th and Wanamaker Rd. Turn West and follow 47th until you get to Vorse Rd.

WESTBORO

Westboro is a central-Topeka neighborhood featuring large homes in Italian Renaissance Revival, French Eclectic and Colonial styles. The neighborhood features winding streets of stately homes and expansive green spaces. With several art galleries, eateries and boutiques nearby, Westboro is a high-end, trendy neighborhood ideally suited for individuals who like to walk to destinations.



ROCKFIRE AT THE LAKE

Rockfire at the Lake is a highly desirable, Topeka subdivision, featuring Dultmeier Homes, in Shawnee Heights School District. Located off SE 45th and Croco Road, Rockfire at the Lake features many amenities, such as gorgeous views of Lake Shawnee, walking trails, access to the Lake Shawnee Golf Course and Park, clubhouse access with an indoor pool and fitness center and much more. Not to mention, the beautiful homes!

LAKE SHERWOOD

The Lake Sherwood community, located just outside the city limits southwest of Topeka, is thriving, lively place in which to call home. Lake Sherwood is also home to one of the largest Fourth of July celebrations in the Topeka community. Long strolls, friendly neighbors and a feeling of living outside of town while still being a short distance from city conveniences are just a few of the great aspects of living in Sherwood.

STERLING CHASE

This beautiful subdivision located in northwest Topeka is perfect for anyone looking to settle down in a quiet, cozy neighborhood. Offering large lots and a walking trail, Sterling Chase guarantees wide-open spaces. Enjoy the peaceful rural environment, just a short drive from intercity amenities. Located in the Seaman School District, Sterling Chase offers the room for your family to grow.



College Hill



Downtown Lofts



Lake Sherwood

IMPORTANT NUMBERS TO KNOW

EMERGENCIES

(fire, police, sheriff, ambulance)	911
Poison Control Center	785.354.6106
University of Kansas Health Systems	
St. Francis Campus	785.295.8000
Highway Patrol	Mobile: *47
Kansas Turnpike Authority Road Conditions	511
Kansas Turnpike Authority Emergency Line	*KTA (*582)
The Veteran's Administration Hospital	785.350.3111

ADMINISTRATIVE CALLS

Ambulance	785.233.2400
Kansas Highway Patrol	785.296.6800
Shawnee County Sheriff's Office	785.251.2200
Topeka Fire Department	785.368.4000
Topeka Police Department	785.368.9551

IDENTIFICATION SOURCES

Kansas State Driver's License Exam Station	785.296.3963
Voter Registration	785.251.5900
Social Security Administration Topeka Branch	888.327.1271
Deaf or Hard of Hearing	785.368.8034
Motor Vehicle Tags	785.251.5415

UTILITY HOOK UPS - ELECTRICITY

Evergry	800.383.1183
FreeState Electric Cooperative, Inc.	800.794.1989

UTILITY HOOK UPS - GAS

Kansas Gas Service	800.794.4780
--------------------	--------------

WATER/SEWER

Water and Sewer Service (City of Topeka)	785.368.3111
Rural Water District #4 (Shawnee County)	785.286.1729

CHILD CARE REFERRAL

Child Care Aware of Eastern Kansas can help locate child care openings. A regulated child care resource and referral agency, the organization serves a 33-county area. The agency assists parents and child care providers alike.

Child Care Aware of Eastern Kansas
1100 SW Wanamaker Road, Suite 201, Topeka, KS 66604
785.357.5171

Child Care Referral Hotline: 877.678.2548
east.ks.childcareaware.org

Our TOPEKA Story

THE MARTINEZ FAMILY: A Story of Roots and Growth in Topeka

For Lisa and Luis Martinez, Topeka is more than just a place to live. While their paths to the capital city may have been different, Topeka has become their family's home.

Lisa's journey to Topeka began before she was born. Her parents moved to the city from Colorado in 1976 when her father accepted an apprenticeship at Menninger Hospital. Lisa was born here, grew up here, and attended school here, eventually graduating from Washburn University.

"After graduation, I became a high school Spanish teacher, and in 2022, I was honored to be selected as part of the Kansas Teacher of the Year Team," Lisa shared. "That experience allowed me to travel across the state and see the incredible things Kansas offers."

Luis, meanwhile, came to Topeka from Mexico City as a teenager. Initially, he struggled with the quieter pace, compared to the hustle of his hometown, but he soon grew to love the city.

"I studied business and graduated from Washburn University, where I found opportunities for professional growth and networking," he said. "I've come to appreciate Topeka's stability and its accessibility to places like Manhattan, Lawrence, and Kansas City. Most of my family lives here now, and that makes it feel even more like home."

Luis added there's also a sense of calm, family-centered living that he's come to treasure. "Topeka may not have the big-city feel," he said, "but it gives back in subtle, meaningful ways."

"Topeka is special because it offers the perfect balance of being the state capital with a small-town feel," Lisa added. "It's easy to get around, and you're never far from where you need to be. The community energy here is so fun, especially with the growing number of events that not only bring locals together but also draw visitors from all over."

For the Martinez family, Topeka has been an ideal place to live, work, and play. The city's affordability allowed Lisa to purchase a home before marrying Luis, and they were later able to turn it into a rental property. Both found rewarding jobs in the city—Lisa as a teacher and Luis in business. The family also enjoys Topeka's family-friendly activities, like the Kansas Children's Discovery Center, the Topeka Zoo, and the Topeka and Shawnee County Public Library's educational programs.

When asked about their children's education, Lisa



shared, "I remember when close friends told us about Topeka's bilingual school, Scott Dual Language Magnet Elementary School. Being a mostly Spanish-speaking family, it was important to us that our children not only become bilingual but biliterate as well. I was afraid that 'Scott DL' would be out of reach for us financially. When I found out that it was a public school, I was ecstatic! The program has supported our kids' bilingual development and brings together students from English and Spanish



first-language backgrounds, creating an inclusive learning environment with a highly diverse staff. It's a truly special place."

According to Lisa, Topeka also offers excellent educational opportunities beyond elementary school, like outstanding music and theater programs and strong college-prep pathways.

"It's also been so exciting to watch Washburn University

blossom and strive to provide the best experience for students," Lisa said. "Topeka offers an education that feels both personal and world-class."

Topeka has offered the Martinez family a place to thrive, allowing Lisa, Luis, and their kids to build a fulfilling life full of opportunities and growth. With its evolving arts scene, educational resources, and welcoming community, Topeka remains a city full of unexpected charm and potential.

A woman with long dark hair is smiling and holding a young child who is laughing. The woman is wearing a light-colored top, and the child is wearing a dark blue patterned dress. The background is a soft, out-of-focus indoor setting.

Our Goal: To make our place a trusted source for your financial well-being.

It all began in 1892 when 11 people saw it as their place and purpose to support the financially insecure in our community. Today, the place our founders established with \$11 has helped customers across America achieve their retirement dreams for more than 50 years.

Are you looking for a place to put your assets for your own confident, comfortable retirement? Get in touch with your financial professional to start planning how to make your future well-being a reality.



For more information about Security Benefit, visit SecurityBenefit.com.

Annuities are issued by Security Benefit Life Insurance Company (SBL) in all states except New York.

Services are offered through **Security Distributors**, a subsidiary of SBL which is wholly owned by SBL Holdings, Inc. (Security Benefit).

SB-10052-72 | 2024/09/30



Building a more connected world every day

Communities are about connection, and at Cox, it's at the heart of everything we do. Whether it's through investing in our fiber-based network or expanding digital equity, we're committed to supporting our customers at work and at home and giving back to the communities we live and serve in.



PLAY your WAY



PRAIRIE BAND
CASINO & RESORT

1-888-PBP-4WIN | prairieband.com

Do you enjoy playing your cards right at the blackjack table? Or doubling down on massage tables at the Cedar & Sage Spa? Maybe you prefer to go all in – into the pool, that is. Prairie Band has it all. So you can have all the fun.



More ways to play your way



Must be 18 years of age or older to gamble. Owned by the Prairie Band Potawatomi Nation.
Getting help is your best bet. Call the confidential toll-free Problem Gambling Helpline at 1-800-522-4700.